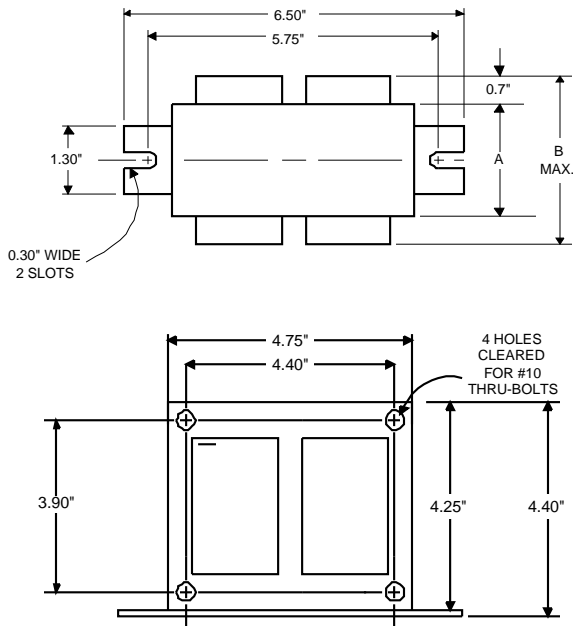


DIMENSIONS AND DATA

4 1/4 X 4 3/4 CORE - 2 COIL UNIT



Capacitor: 7C240P40-R



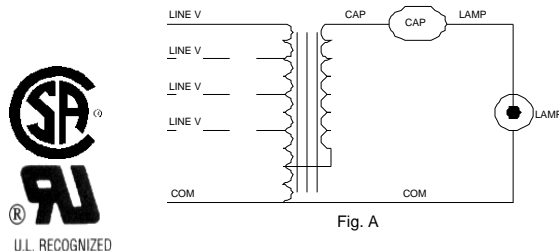
Capacitance: 24
Dia/Oval Dim: 1.75
Height: 5.125
Temp Rating: 105°C

Ignitor: NA

This ballast does not require the use of an ignitor.

INPUT VOLTS		120	208	240	277	480
CIRCUIT TYPE	CWA					
POWER FACTOR (min)	90%					
REGULATION						
Line Volts	±10%					
Lamp Watts	±10%					
LINE CURRENT (Amps)						
Operating.....		4.10	2.30	2.00	1.70	1.00
Open Circuit.....		3.70	1.75	1.60	1.30	0.80
Starting.....		2.70	1.60	1.35	1.20	0.70
UL TEMPERATURE RATINGS	H(180°C)					
Insulation Class	1029					
Coil Temperature Code	-20°F or -30°C	D	C	D	C	D
MIN. AMBIENT STARTING TEMP.	300					
NOM. OPEN CIRCUIT VOLTAGE						
INPUT VOLTAGE AT LAMP DROPOUT.....	460	60	104	120	138	240
INPUT WATTS						
RECOMMENDED FUSE (Amps).....		10	7	5	5	3
CORE and COIL	2.20					
Dimension (A)	4.00					
Dimension (B)	13					
Weight (lbs.)	12"					
Lead Lengths						
CAPACITOR REQUIREMENT	24.0					
Microfarads	400					
Volts (min.)						
Fault Current Withstand (amps)						
60 Hz TEST PROCEDURES (Refer to Philips Lighting Electronics N.A. TEST Procedure for HID Ballasts - Form High Potential Test (Volts)	2000					
1 minute	2500					
2 seconds	270-330					
Open Circuit Voltage Test (Volts)						
Short-Circuit Current Test (Amps)	3.55-4.35					
Secondary Current						
Input Current.....		2.10	1.20	1.10	0.90	0.50
		3.10	1.80	1.60	1.35	0.80

Wiring Diagram:



Typical Ordering Information

(please call Philips Lighting Electronics N.A. for suffix availability)

Order Suffix	Description
510D	Ballast w/Welded Bracket & Dry Film Capacitor
610	Ballast with Welded Bracket, No Capacitor

Data is based upon tests performed by Philips Lighting Electronics N.A. in a controlled environment. Actual performance can vary depending on operating conditions. Specifications are subject to change without notice.

PHILIPS LIGHTING ELECTRONICS N.A.

10275 WEST HIGGINS ROAD · ROSEMONT, IL 60018

Tel: 800-322-2086 · Fax: 888-423-1882 · www.philips.com/advance

Customer Support/Technical Service: 800-372-3331 · OEM Support: 866-915-5886

Revised: 07/12/04