



**EYE LIGHTING INTERNATIONAL  
OF NORTH AMERICA, INC.**  
A SUBSIDIARY OF IWASAKI ELECTRIC CO., LTD.

Home About Us Products How to buy Trade Shows Trade Associations Industry Links Lighting FAQs Lighting Library

**MR8 - 25mm Reflector**

**EYE Dichro-Cool®**

**Features**

- Approx. 1 inch (25mm) compact size reflector enables installation in small fixtures
- Precise optical design
- Long lasting Dichroic coating
- Consistent light color and brightness

**Applications**

- Display case
- Museums
- Restaurants
- Retail stores
- Lounges
- Offices
- Home

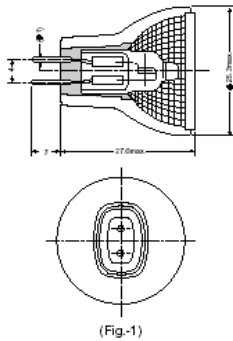
**IES data files**

[JM8051](#)      [JM8251](#)      [JM8252](#)  
[JM8351](#)      [JM8352](#)

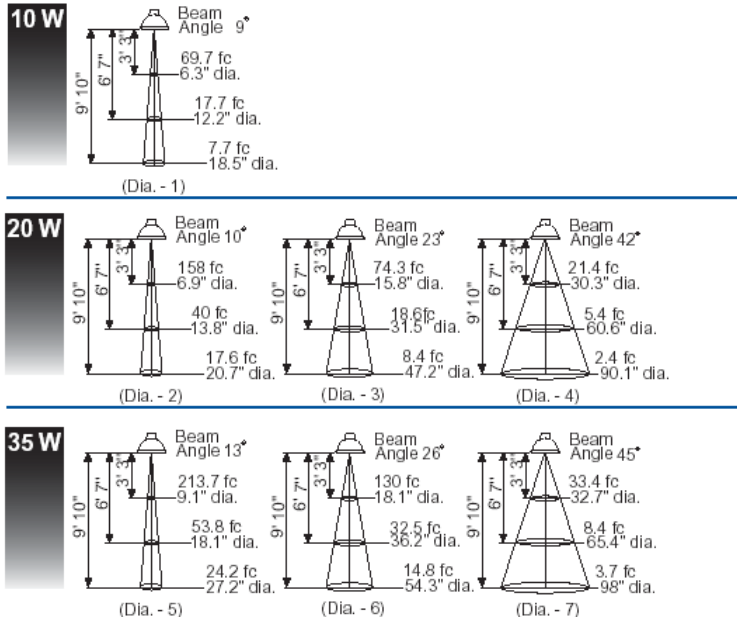
6 - 12V Dichroic Reflector Miniature 2-Pin Base - GZ4 with Cover Glass												
Watts	Volts	Base	Product	Product	Product	Case	Ctr. Beam	Average	Color	Filament	Beam	
(W)	(V)		Code	Description	Comparison Guide	Qty	Intensity (cd)	Life Hours	Temp (k)		Spread data	
10	6	GZ4	<a href="#">79690</a>	JM8051	10MR8CG/GZ4/9°6V	50	750	2000	2950	C-8	Dia.1	
20	12	GZ4	<a href="#">79700</a>	JM8251	20MR8CG/GZ4/10°	50	1700	2000	3050	C-8	Dia.2	
	12	GZ4	<a href="#">79705</a>	JM8252	20MR8CG/GZ4/23°	50	800	2000	3050	C-8	Dia.3	
	12	GZ4	79708	JM8252F	20MR8FCG/GZ4/42°	50	230	2000	3050	C-8	Di a.4	
35	12	GZ4	<a href="#">79710</a>	JM8351	35MR8CG/GZ4/13°	50	2300	2000	3050	C-8	Dia.5	
	12	GZ4	<a href="#">79715</a>	JM8352	35MR8CG/GZ4/26°	50	1400	2000	3050	C-8	Dia.6	
	12	GZ4	79720	JM8352F	35MR8FCG/GZ4/45°	50	360	2000	3050	C-8	Di a.7	

Burning Position: Universal

**Lamp Drawings** unit: mm



- The intensity level at the center of the beam is shown in footcandles.
- Beam diameter in inches is shown at a distance of 3 ft. 3 in., 6 ft. 7 in., and 9 ft. 10 in.
- The intensity level at the outer edge of the beam diameter is 50% of the center beam footcandle reading.



--top--