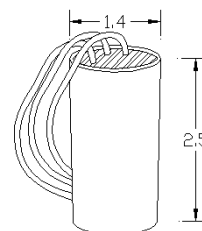
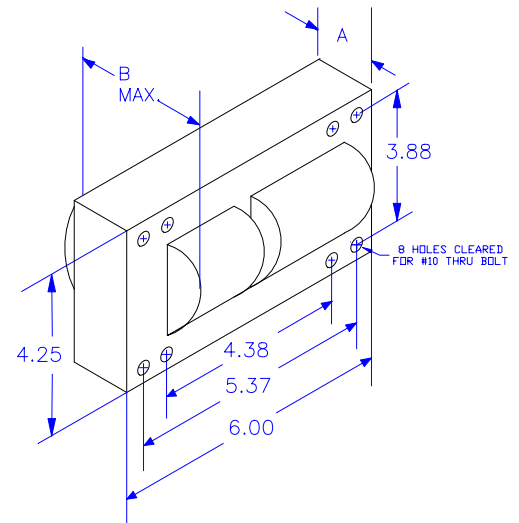
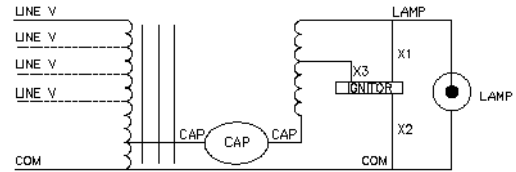




<b>Input Volts</b>		120	208	240	277
<b>Circuit Type</b>	PS-CWA				
<b>Power Factor</b>	0.98				
<b>Regulation</b>					
Line Volts	± 10 %				
Lamp Watts	- 13% + 13 %				
<b>Line Current (Amps)</b>					
Operating	8.9	4.9	4.5	3.9	
Open Circuit	4.8	2.3	2.4	2.1	
Starting	6.2	3.7	3.1	2.7	
Recommended Fuse	20	15	10	10	
<b>UL Temperature Ratings</b>					
Insulation Class	H (180°C)				
Coil Temperature Code	C	C	B	B	
Benchtop Coil Rise Primary	81	80	75	76	
Benchtop Coil Rise Secondary	83	-	-	80	
<b>Input Watts</b>	1075	1028	1079	1075	
<b>NOM Open Circuit Volts</b>	420				
<b>Current Crest Factor</b>	1.59				
<b>Input Voltage at Lamp Dropout</b>	71	143	153	192	
<b>Min Ambient Starting Temp.</b>	-20°F -30°C				
<b>High Potential Test (Volts)</b>					
1 Minute	2000				
1 Second	2400				
<b>Open Circuit Voltage Test (Volts)</b>					
Open Circuit Voltage	380 - 460				
Input Current	min	3.60	1.75	1.85	1.60
	max	6.00	2.90	3.05	2.60
<b>Short Circuit Current Test (Amps)</b>					
Secondary Current	5.0 - 6.2				
Input Current	min	4.60	2.75	2.30	2.00
	max	7.65	4.60	3.85	3.35
<b>Core and Coil Specifications</b>					
Dimension A"	3.00				
Dimension B"	5.50				
Weight (lbs.)	19.5				
Lead Lengths (in)	12				
<b>Capacitor Specifications</b>					
Microfarads	24				
Volts (min.)	480				
	<b>Oval OIL Filled DRY Film</b>				
Case Size (in.)	1.75	Not Available			
Height (in.)	3.88				
Temp Rating °C	90				
<b>Starter Specifications</b>					
Model Number	ST2002				
BTL	2				
Temp Rating °C	105				

Wiring Diagram



Starter Case Drawing

None

Specifications subject to change without notice.