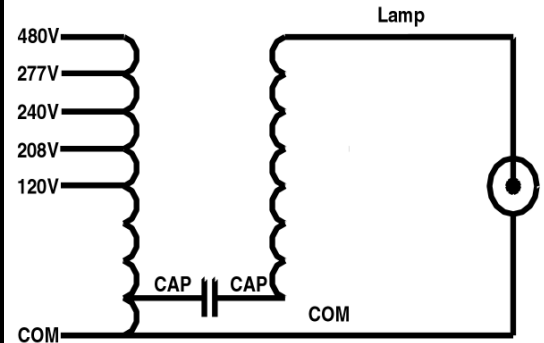


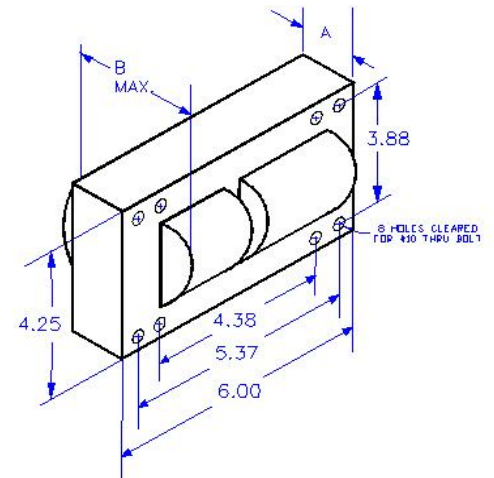


Input Volts		120	208	240	277	480
Circuit Type	CWA					
Power Factor	0.98					
Regulation						
Line Volts	±10					
Lamp Watts	- 10 % + 10 %					
Line Current (Amps)						
Operating		9.1	5.2	4.5	3.9	2.2
Open Circuit		4.4	2.7	2.1	1.8	1.0
Starting		6.5	3.8	3.3	2.8	1.6
Recommended Fuse		25	15	15	9	6
UL Temperature Ratings						
Insulation Class	H(180°C)					
Coil Temperature Code		1029C	1029B	1029B	1029B	1029B
Benchtop Coil Rise Primary		81	75	75	76	78
Benchtop Coil Rise Secondary		82	-	-	-	76
Input Watts		1065	1053	1052	1053	1056
NOM Open Circuit Volts	425					
Current Crest Factor	1.55					
Input Voltage at Lamp Dropout		68	120	131	185	294
Min Ambient Starting Temp.	-20°F -30°C					
High Potential Test (Volts)						
1 Minute	2000					
1 Second	2400					
Open Circuit Voltage Test (Volts)						
Open Circuit Voltage	380 - 470					
Input Current	min	3.30	2.30	1.70	1.40	0.90
	max	5.55	3.90	2.85	2.35	1.50
Short Circuit Current Test (Amps)						
Secondary Current	5.1 - 6.3					
Input Current	min	4.80	2.70	2.40	2.05	1.15
	max	8.00	4.50	4.00	3.50	1.90
Core and Coil Specifications						
Dimension A"	3.75					
Dimension B"	5.75					
Weight (lbs.)	21.5					
Lead Lengths (in)	12					
Capacitor Specifications						
Microfarads	24					
Volts (min.)	480					
Oval OIL Filled DRY Film						
Case Size (in.)	1.75 Not Available					
Height (in.)	3.88					
Temp Rating °C	90					
Starter Specifications						
Model Number	Not Used					
	BTL					
Temp Rating °C						

Wiring Diagram Number
1091-912000-018



Outside Dimensions Drawing



Oil Capacitor Can Drawing
1011-007500-003

Dry Capacitor Can Drawing
Not Available

Starter Case Drawing

