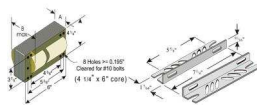


86655 – GEM1000MLTAA5-5

GE HID Distributor Replacement Kit Magnetic Core & Coil Ballast

- Magnetic ballast construction ideal for a wide variety of lighting applications.
- Precision-wound coils, ensuring even heat dissipation and the highest electrical integrity.
- Distributor replacement kit contains the appropriate core & coil with color coded leads, a properly rated capacitor and ignitor (if required) and all other components required for ballast replacement
- Quad ballast (120, 208, 240, 277)

[View Larger](#)**GENERAL CHARACTERISTICS**

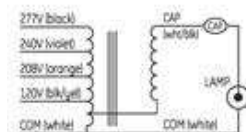
Application	1- 1000w MH M 47 or H 36 Quad
Category	High Intensity Discharge
Ballast Type	Magnetic - Core & Coil
Type	Replacement kit
Line Voltage Regulation (+/-)	10 %
Ballast Factor	Normal
Circuit Type	CWA
Insulation Class	180C
Enclosure Type	None
Capacitance	24 µF
Voltage (MIN)	480
Capacitor Temperature Rating	100 °C (212 °F)
Diameter	2.0 in (50.8 mm)

DIMENSIONS

Case dimensions	
Length (L)	6.0 in (152.40 mm)
Width (W)	4.3 in (107.95 mm)
Mounting dimensions	
Bracket Length (BL)	7.3 in (184.15 mm)
Mount Length (M)	5.4 in (136.52 mm)
Mount Width (X or F)	3.9 in (98.42 mm)
Mount Slots (MS)	0.2 in (4.95 mm)
Weight	21 lbs
Exit Type	Side
Nominal Length	3.7 in (95.25 mm)
Frame size (H x L)	4 1/4 in x 6 in

ELECTRICAL CHARACTERISTICS

Supply Current Frequency	60 Hz
--------------------------	-------

[View Larger](#)**PRODUCT INFORMATION**

Product Code	86655
Description	GEM1000MLTAA5-5
Standard Package	Master
Standard Package Quantity	2
Sales Unit	Distributor Kit
No Of Items Per Sales Unit	1
No Of Items Per Standard Package	2
UPC	043168866552

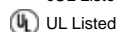
SPECIFICATIONS BY LAMP & LINE VOLTAGE

Lamp	# of Lamps	Specifications by Line Voltage				
		120	208	240	277	
(1000 W Quartz Metal Halide)	1					
		System Wattage (W)	1067	1067	1067	1067
		Nominal Current	9.00 A	5.00 A	4.50 A	3.90 A
		Ballast Factor	1	1	1	1
		Ballast Efficiency	0.937	0.937	0.937	0.937
		Max Input Current	9.00 A	5.00 A	4.50 A	3.90 A
		Starting Current	7.44 A	4.35 A	3.79 A	3.30 A
	Open Circuit Voltage	421 V	421 V	421 V	421 V	

	Drop Out Voltage	75 V	120 V	150 V	165 V
	Power factor (>=) %	90	90	90	90
	Min. starting temperature	-22 °F (-30 °C)	-22 °F (-30 °C)	-22 °F (-30 °C)	-22 °F (-30 °C)
	Fuse rating	20	15	10	10
	UL bench top rise	B	B	B	B
		System specs	System specs	System specs	System specs
H36	1	120	208	240	277
(1000 W Mercury)	System Wattage (W)	1067	1067	1067	1067
	Nominal Current	9.00 A	5.00 A	4.50 A	3.90 A
	Ballast Factor	1	1	1	1
	Ballast Efficiency	0.937	0.937	0.937	0.937
	Max Input Current	9.00 A	5.00 A	4.50 A	3.90 A
	Starting Current	7.44 A	4.35 A	3.79 A	3.30 A
	Open Circuit Voltage	421 V	421 V	421 V	421 V
	Drop Out Voltage	75 V	120 V	150 V	165 V
	Power factor (>=) %	90	90	90	90
	Min. starting temperature	-22 °F (-30 °C)	-22 °F (-30 °C)	-22 °F (-30 °C)	-22 °F (-30 °C)
	Fuse rating	20	15	10	10
	UL bench top rise	B	B	B	B
			System specs	System specs	System specs

Safety & Performance

cUL Listed



[See list of cautions & warnings.](#)

NOTES

- Kit contains the appropriate core & coil with color coded leads, a properly rated capacitor and ignitor (if required) and all other components required for ballast replacement

WARRANTY INFORMATION

GE Lighting warrants to the purchaser that each ballast will be free from defects in material or workmanship for period as defined in the attached documents from the date of manufacture when properly installed and under normal conditions of use.

[Download full warranty](#)