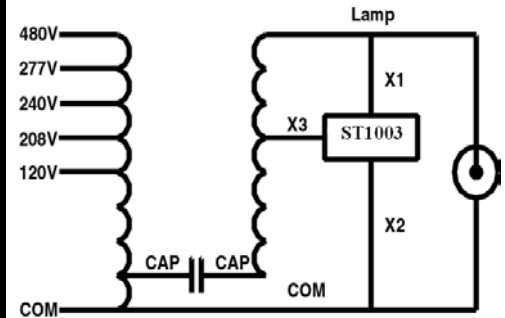


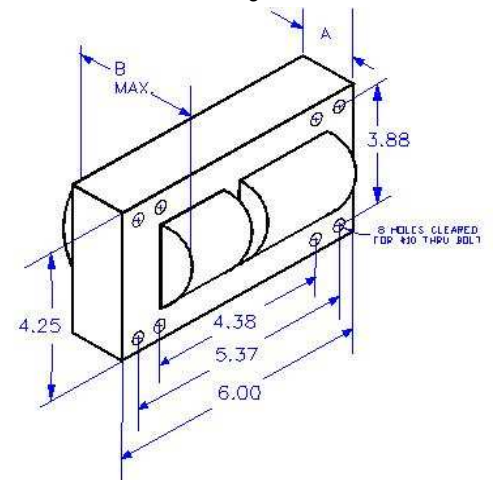


Input Volts		120	208	240	277	480
Circuit Type	PS-CWA					
Power Factor	0.96					
Regulation						
Line Volts	±10					
Lamp Watts	- 10 % + 10 %					
Line Current (Amps)						
Operating		7.08	4.11	3.58	3.10	1.80
Open Circuit		3.15	1.85	1.65	1.42	0.84
Starting		6.17	3.57	3.08	2.67	1.56
Recommended Fuse		15	9	8	7	4
UL Temperature Ratings						
Insulation Class	H(180°C)					
Coil Temperature Code		1029C	1029C	1029C	1029C	1029D
Benchtop Coil Rise Primary		80	78	83	83	86
Benchtop Coil Rise Secondary		80	81	84	84	84
Input Watts		827	823	823	825	827
NOM Open Circuit Volts	395					
Current Crest Factor	1.67					
Input Voltage at Lamp Dropout		60	104	120	138.5	240
Min Ambient Starting Temp.	-20°F -30°C					
High Potential Test (Volts)						
1 Minute	2000					
1 Second	2400					
Open Circuit Voltage Test (Volts)						
Open Circuit Voltage	355 - 435					
Input Current	min	2.35	1.40	1.25	1.05	0.65
	max	3.95	2.30	2.10	1.80	1.05
Short Circuit Current Test (Amps)						
Secondary Current	3.10 - 5.15					
Input Current	min	4.60	2.65	2.30	2.00	1.15
	max	7.65	4.40	3.85	3.30	1.90
Core and Coil Specifications						
Dimension A"	3.00					
Dimension B"	5.00					
Weight (lbs.)	21.5					
Lead Lengths (in)	12					
Capacitor Specifications						
Microfarads	24					
Volts (min.)	480					
	Oval OIL Filled DRY Film					
Case Size (in.)	1.75 Not Available					
Height (in.)	3.88					
Temp Rating °C	90					
Starter Specifications						
Model Number	ST1003					
BTL	10					
Temp Rating °C	105					

Wiring Diagram Number
1091-912000-003



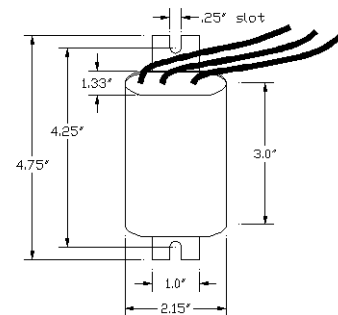
Outside Dimensions Drawing



Oil Capacitor Can Drawing
1011-007500-003

Dry Capacitor Can Drawing
Not Available

Starter Case Drawing



Specifications subject to change without notice.