

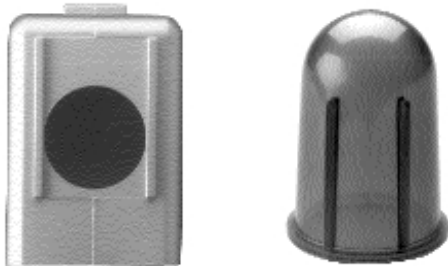
TORK PHOTOELECTRIC CONTROLS

DESIGN FEATURES

TORK photoelectric controls are designed and manufactured with components which adhere to the highest industry standards. Trained personnel and in-process quality control procedures assure that each and every unit meets our strict quality standards.

TOUGH ENCLOSURES

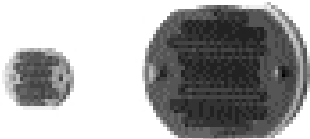
All conduit and flush mounted models utilize either die cast zinc or genuine Lexan® materials.



All turn-lock models utilize high impact UV stabilized polypropylene materials.



CHOICE OF PHOTOCELLS



Cadmium sulphide, epoxy sealed cells are available in 1/2 inch and 1 inch. (1/2 inch hermetically-sealed cells available on turn-lock models).

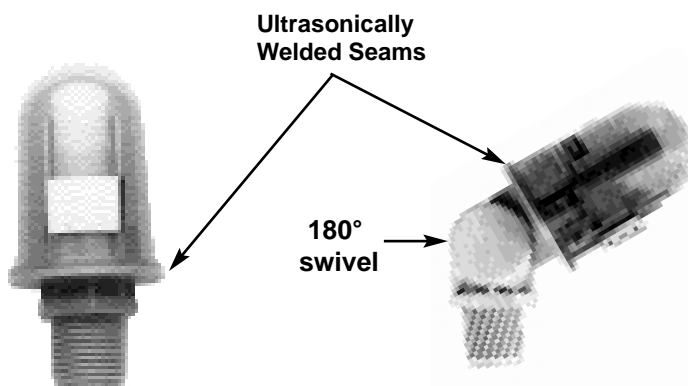
DEPENDABLE AMBIENT LIGHT READINGS

Built-in delay prevents false switching due to light from vehicles, lightning, etc. (Instant response available on some turn-lock models).



CHOICE OF MOUNTING ORIENTATION

Models are available with fixed position or swivel.



TURN-LOCKS MEET ANSI C136.10

All models meet the latest ANSI requirements for locking type prongs and color coded voltage designations.



Color Coded Domes

Gray	105-130VAC
Maroon	208-277VAC
Blue	105-285VAC
Yellow	480VAC

Solid Brass
Locking Blades