

The Power of Illumination

www.bplusl.com

Nuance 6

Ballast for compact & linear fluorescent lamps



"A Match Box Size Power Pack"



The Nuance 6 electronic ballast provides the flexibility required by modern lighting fixture designs. The size of a match box, the Nuance 6 ballast, will operate a wide range of compact and linear lamps to suit many of your 120V, 277V or 347V applications. It can power up 1 or 2 lamps up to a 28W combination.

Unlike many other ballasts on the market, the Nuance 6 is designed to operate lamps independently in a 2 lamp application. As a result, if a lamp is defective, the remaining lamp will stay on. It also allows to replace the defective lamp without power interruption. This feature will facilitate lamp maintenance.

B+L's Nuance 6 ballast offers you multiple possibilities to meet your requirements and please your customers.

Model : NU6-1128-PSX



The Flexible NU6 will power up all of these lamps:

120V

Twin (4 pins)	Quad (4 pins)	Triple (4 pins)	2D	T5	T8	T12
1 & 2 x 5W	1 & 2 x 10W	1 & 2 x 13W	1 & 2 x 10W	1 & 2 x F4	1 x F13	1 & 2 x F14
1 & 2 x 7W	1 & 2 x 13W	1 x 18W	1 x 16W	1 & 2 x F6	1 x F14	1 x F15
1 & 2 x 9W	1 x 18W	1 x 26W	1 x 21W	1 & 2 x F8	1 x F15	1 x F20
1 & 2 x 11W	1 x 26W		1 x 28W	1 & 2 x F13	1 x F16	
1 x 13W				1 & 2 x F14	1 x F17	
1 x 18W				1 x F21	1 x F18	
1 x 24W				1 x F28	1 x F25	

277V or 347V (These models have EOL protection circuit. Do not use EOL lamps on these models, ballasts damage may result)

Twin (4 pins)	Quad (4 pins)	Triple (4 pins)	2D	T5	T8	T12
1 x 5W	1 x 10W	1 x 13W	1 x 10W	1 x F4	1 x F13	1 x F14
1 x 7W	1 x 13W	1 x 18W	1 x 16W	1 x F6	1 x F14	1 x F15
1 x 9W	1 x 18W	1 x 26W	1 x 21W	1 x F13	1 x F15	1 x F20
1 x 11W	1 x 26W		1 x 28W	1 x F14	1 x F16	
1 x 13W				1 x F21	1 x F17	
1 x 18W				1 x F28	1 x F18	
1 x 24W					1 x F25	

Notes: This lamp list could be modified at any time. Other low wattage lamps could potentially be used with the Nuance 6 ballast. Lamps not included in the above list can be tested by B+L Technologies on request.

B+L Technologies reserves the right to change dimensions, specifications and prices without notice.

* NU6 ballasts are instant start ballasts and do not provide current to heat cathode filaments. Lamps that require cathode filament heating may experience shorter life when used with NU6 ballasts. For optimal lamp use, use ballasts that are rated for instant start and rated for operation without cathode heating.

*120V models (NU6-1128) are not equipped with end of lamp life (EOL) sensing circuits. For T4 or smaller applications, lamps with integral EOL protection is recommended to prevent lamp base charring at end of lamp life.

General Specifications

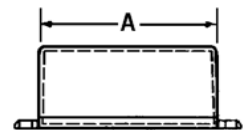
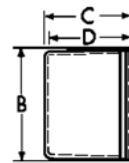
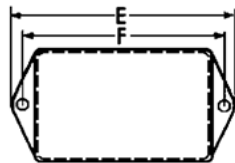
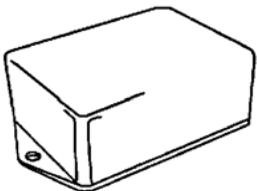
- ✓ Very small plastic casing
- ✓ Will power many type of lamps
- ✓ Input 120V, 277V or 347V 50/60Hz
- ✓ Instant start (120V), rapid start (277 and 347V)
- ✓ High power factor >.9
- ✓ UL (Class P) outdoor Type 1
- ✓ End of lamp life (EOL) protection for 277V and 347V models only
- ✓ Remote mounting: 7.6m (25ft)
- ✓ Maximum ambient temperature: 40°C
- ✓ Maximum casing temperature: 70°C (•t_c)
- ✓ Minimum starting temperature: -10°C
- ✓ Ideal for infrequent on/off applications
- ✓ Can be relamped without power interruption
- ✓ Options available: Casing format
RFI filter (120V only)
- ✓ Open cathode voltage: 415V

Ordering Information

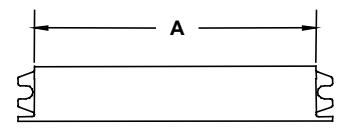
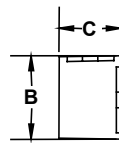
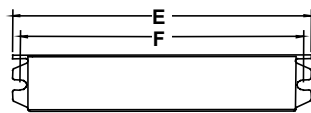
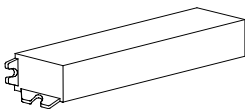
MODEL	INPUT	COMBINATION	MAXIMUM WATTAGE	CASING	WIRES POSITION	CASING FORMAT	OPTION
NU6	1=120V	1= 1 COMBINATION	28=28W	P= PLASTIC	S= SIDE	X= STANDARD	RFI= RFI FILTER (120V only)
	2=277V				C= CENTRE, BOTTOM	S= SLIM	
	3=347V						
NU6	- 1	1	28	- P	S	X	-

Dimensions

Format X, white plastic



Format S, white plastic



FORMAT	A	B	C	D	E	F
X	2.00"	1.50"	1.00"	0.93"	2.88"	2.50"
S	3.76"	1.00"	0.78"	-----	4.20"	4.05"

Wiring Diagrams

Note : Use wires rated for 600VAC or higher for connections from ballast to lamp sockets

Note : Must join 2 red wires together for all NU6-1128 single lamp applications except T5 F8

	TWIN 5, 7 9, 11 13, 18 & 24W	TRIPLE / QUAD 10, 13 18, 26W	T5 F8	T5 F4, F6 F13, F14 F21, F28 T8 F13, F14 F15, F16 F17, F18 & F25 T12 F14, F15 & F20	2D 10, 16 21, 28W	TWIN 5, 7 9, 11W	TRIPLE / QUAD 10, 13W	T5 F4, F6 F8, F13 & F14 T8 F13 & F14 T12 F14	2D 10W
120V 									
120V 									
120V 									
277V / 347V 									

Warranty

We are pleased to offer our standard warranty to the original purchasers of **NU 6** ballasts. Please consult with the factory for details.

Special Notes

- 1) NU6-1128 (120V) models are not equipped with end of lamp life (EOL) sensing circuit. The use of lamps with integral EOL is recommended when using 120V models with T4 or smaller lamps. Lamps without EOL protection may char and smoke at EOL. B+L will not be liable for any costs resulting from non-EOL lamps.
- 2) NU6 ballasts are instant start type. For optimal lamp life, use lamps rated for instant start ballast. Rapid start lamps may experience shorter life. B+L will not be liable for any costs resulting from shorten lamp life when using lamps that are not recommended.
- 3) NU6 ballasts do not provide cathode filament heating current during operation. For optimal lamp life, it is recommended that only lamps rated for operation without cathode current be used with NU6 ballasts

**1131 Autoroute Laval W.
Laval (Quebec)
Canada, H7L 3W3
Tel.: (450) 663-7884
1-800-361-1400
Fax.: (450) 663-7638
www.bplusl.com
info@bplusl.com**

