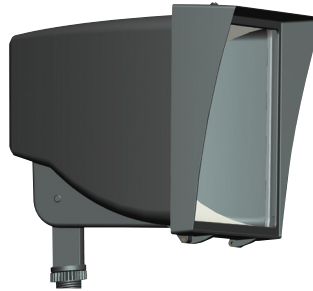




FUTURE FLOOD INSTALLATION INSTRUCTIONS

Thank you for buying RAB lighting fixtures. Our aim is to design the best quality products to get the job done right. We'd like to hear your comments. Call the Marketing Department at 888-RAB-1000, or email: marketing@rabweb.com



IMPORTANT

READ CAREFULLY BEFORE INSTALLING FIXTURE. RETAIN THESE INSTRUCTIONS FOR FUTURE REFERENCE.

RAB fixtures must be wired in accordance with the National Electrical Code and all applicable local codes. Proper grounding is required for safety. This product must be installed in accordance with the applicable installation code by a person familiar with the construction and operation of the product and the hazards involved.

WARNING: Make certain power is OFF before installing or maintaining fixture.

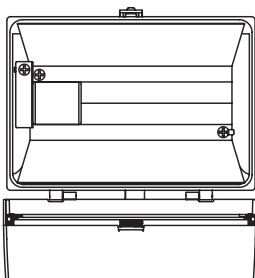
LOCATION

1. Secure the Future Flood to any 1/2" NPS hole in a metal plate coverplate, junction box or landscape post. Plug all unused holes and seal threads with silicone.
2. The swivel arm on the Future Flood allows 150° of vertical aiming adjustment.
3. Do not aim fixture to any object closer than 18 inches.

LAMP INSTALLATION

CAUTION: Prior to installing, check that the lamp is the correct ANSI type and wattage. Observe lamp manufacturer's recommendations on lamp operation, ballast type and burning positions.

1. Disconnect power. Make sure fixture and lamp are cool enough to touch.
2. Remove screw from the door clip on the top of the fixture. Open fixture, swing door down on hinges.
3. Fully insert lamp into socket.
4. Before closing door, make sure frame gasket is properly seated all around the fixture.
5. Close door. Replace screw on door clip, if desired.



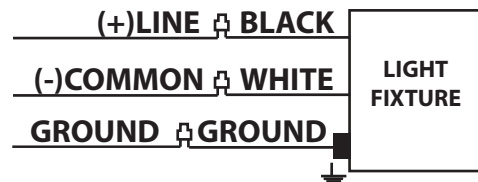
WIRING

Do not use any supply voltage other than those specified below:

FF35-FF150 HPS	120V only
FFH50-70 MH	120V only
FF42QT	120V thru 277V*

*No internal wiring changes needed for various voltages as the ballast is quad tap electronic.

1. Connect the black fixture lead to the (+) LINE supply lead.
2. Connect the white fixture lead to the (-) COMMON supply lead.
3. Connect the bare copper Ground wire from fixture to supply ground.



CLEANING & MAINTENANCE

CAUTION: Be sure fixture temperature is cool enough to touch. Do not clean or maintain while fixture is energized.

1. Clean glass lens with non-abrasive glass cleaning solution.
2. As lamps age, light output diminishes. Mass relamping at regular intervals ensures full light output at the highest efficiency.

FUTURE FLOOD INSTALLATION INSTRUCTIONS

REPLACEMENT LAMPS AND BALLASTS

Wattage	Lamp Catalog#	ANSI Code	Ballast Catalog#
High Pressure Sodium			
35	LHPS35	S76	BHPSN35
50	LHPS50	S68	BHPSN50
70	LHPS70	S62	BHPSN70
100	LHPS100	S54	BHPSN100
150	LHPS150	S55	BHPSN150
Metal Halide			
50	LMH50	M110	BMHN50
70	LMH70	M98	BMHN70
Compact Fluorescent			
42	LCFL42	Base Type GX24q-4	BCLF42

ACCESSORIES AND REPLACEMENT PARTS

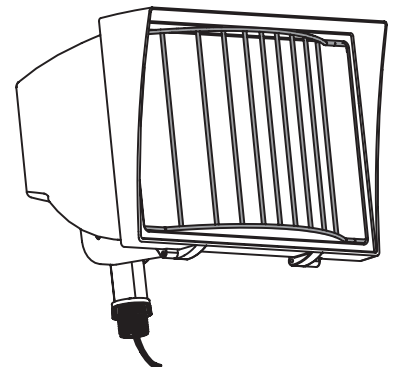
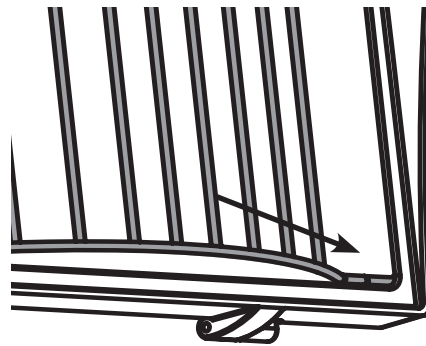
Chrome Wire Guard:	GDFP
Door and Frame with Glass:	LFF (bronze) LFFW (white)
Swivel Arm:	FFLARMA (bronze) FFLARMW (white)
Factory Installed Photocell:	"/PC" (120V) "/PC2" (277V) "/PCS" (Swivel 120V)

TROUBLESHOOTING

1. Is the proper lamp is installed? Check the wattage and ANSI code on the fixture label against markings on the lamp. Refer to Replacement Lamp table above for verification.
2. Make sure the lamp is not defective. Try a lamp known to be in operating condition.
3. Check that the line voltage at fixture is correct. Refer to wiring directions.
4. Is there voltage at the lamp socket? If there is no voltage, check all connections.
5. Is the fixture is grounded properly?
6. Is the photocell is functioning properly (if used)?

GUARD INSTALLATION

1. Slide top and bottom ends of one side of guard into notches in the door frame.
2. Squeeze guard and slide the other ends of the guard into notches on the opposite side of the frame.



Note: These instructions do not cover all details or variations in equipment nor do they provide for every possible situation during installation, operation or maintenance.