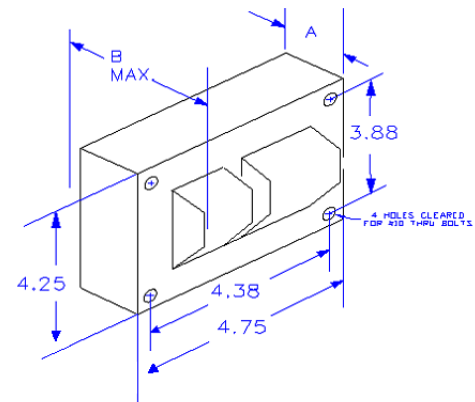
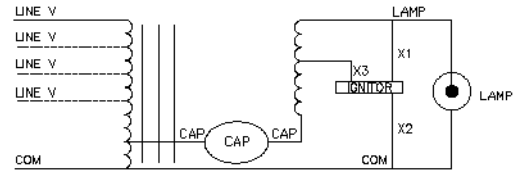




Input Volts		120	208	240	277
Circuit Type	PS-CWA				
Power Factor	.98				
Regulation					
Line Volts	± 10 %				
Lamp Watts	- 9 % + 6 %				
Line Current (Amps)					
Operating		3.5	2.00	1.75	1.50
Open Circuit		2.05	1.15	1.05	0.90
Starting		2.65	1.55	1.30	1.15
Recommended Fuse		10	7	5	5
UL Temperature Ratings					
Insulation Class	H (180°C)				
Coil Temperature Code		D	D	D	D
Benchtop Coil Rise Primary		87	86	87	87
Benchtop Coil Rise Secondary		87	-	-	89
Input Watts		410	410	410	410
NOM Open Circuit Volts	280				
Current Crest Factor	1.64				
Input Voltage at Lamp Dropout		70	110	120	140
Min Ambient Starting Temp.	-20°F -30°C				
High Potential Test (Volts)					
1 Minute	1650				
1 Second	2000				
Open Circuit Voltage Test (Volts)					
Open Circuit Voltage	250 - 310				
Input Current	min	1.45	0.80	0.75	0.60
	max	2.45	1.35	1.25	1.05
Short Circuit Current Test (Amps)					
Secondary Current	3.0 - 3.8				
Input Current	min	1.75	1.00	0.85	0.75
	max	2.90	1.65	1.45	1.25
Core and Coil Specifications					
Dimension A"	1.92				
Dimension B"	3.75				
Weight (lbs.)	10.25				
Lead Lengths (in)	12				
Capacitor Specifications					
Microfarads	20.5				
Volts (min.)	380				
	Oval OIL Filled	DRY Film			
Case Size (in.)	1.75	1.8			
Height (in.)	3.4	4.7			
Temp Rating °C	90	100			
Starter Specifications					
Model Number	ST1001				
BTL	5				
Temp Rating °C	105				

Wiring Diagram



- Outside Dimensions Drawing 1080-046447-000
- ISO-View of Core Coil 1091-912002-002
- 1091-912002-009
- Oil Capacitor Can Drawing 1011-007500-003
- Dry Capacitor Can Drawing 1012-007500-001



Starter Case Drawing
1091-912001-001

Rev. Date: 11/29/2006

Test Ref.: Validation

Specifications subject to change without notice.