

Single Pole (One location) or 3-Way (Multi-location) Fluorescent Slide Dimmer

Cat. No. IPX06-1, 600VA-120VAC, 60Hz / Cat. No. IPX10-1, 1000VA-120VAC, 60Hz
 Cat. No. IPX06-7, 600VA-277VAC, 60Hz / Cat. No. IPX12-7, 1200VA-277VAC, 60Hz
 For use with Mark 10™ *Powerline* dimmable ballasts.

INSTALLATION INSTRUCTIONS

WARNINGS AND CAUTIONS :

- To be installed and/or used in accordance with appropriate electrical codes and regulations.
- If you are unsure about any part of these instructions, consult a qualified electrician.
- To avoid overheating and possible damage to this device and other equipment, use only with the appropriate Advance Transformer 120/277V Mark 10™ *Powerline* electronic ballasts for controlling the specific fluorescent lamps.
- When retrofitting Mark 10™ *Powerline* dimming ballasts into fixtures that originally had Instant Start ballasts, the sockets MUST be replaced with Rapid Start sockets to allow proper dimmer operation and prevent damage to the dimmer ballast. Refer to the instructions provided with the ballast.

WARNINGS AND CAUTIONS:

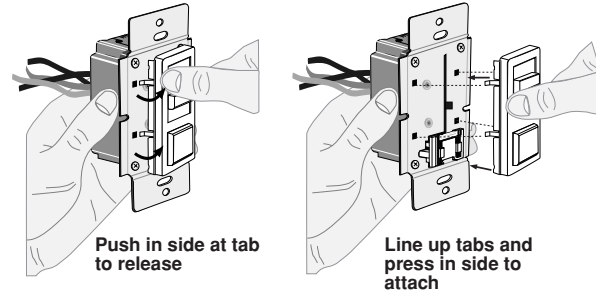
- Use only one (1) dimmer in a 3- or 4-way circuit. The switch(es) will turn the light on at the brightness level selected at the dimmer.
- Lighting fixture and dimmer must be grounded.
- Disconnect power at circuit breaker or fuse when servicing fixture.
- Use this device only with copper or copper clad wire. With aluminum wire use only devices marked CO/ALR or CU/AL.

Tools needed to install your Dimmer:

- | | |
|-----------------------------|-----------------|
| Slotted/Philips Screwdriver | Electrical Tape |
| Pliers | Pencil |
| Cutters | Ruler |

Changing the color of your Dimmer:

Your Dimmer includes two color options. The Dimmer ships with the White frame attached. To change color of frame, proceed as follows:



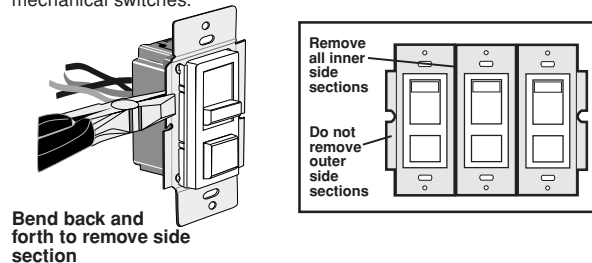
Move the slider up or down one full cycle to automatically engage the slider control mechanism.

Installing Dimmer by itself or with other devices:

If installing Dimmer in a single device application, proceed with the **INSTALLING YOUR DIMMER** section. If installing Dimmer in a multi-device application, proceed as follows:

MULTI-DEVICE APPLICATION:

NOTE: You only need to remove side sections if installing with other dimmers or if it does not fit in wall box – not when installing with mechanical switches.



When installing more than one dimmer in the same location, the side sections of the mounting strap must be removed. Use pliers to carefully bend side sections back and forth until they break off. The side sections dissipate heat, so removing them sometimes requires a derating of the dimmer's capacity (**refer to chart**).

MAXIMUM LOAD PER DIMMER FOR MULTI-DEVICE			
Cat. No.	Single	Two Devices	More than 2 Devices
IPX06-1	600VA	500VA	400VA
IPX10-1	1000VA	800VA	700VA
IPX06-7	600VA	600VA	600VA
IPX12-7	1200VA	1200VA	1200VA

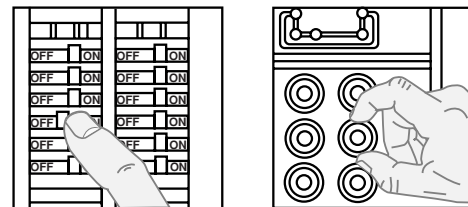
MAXIMUM BULB WATTAGE:

Mark 10™ *Powerline* dimmers are rated in Volt-Amps (VA). The maximum bulb wattage is determined by the efficiency of the Mark 10™ *Powerline* ballast. The tables on the next page show the maximum number of ballasts that can be connected to a single dimmer for different Mark 10™ *Powerline* ballasts. Also note that the table on the next page shows maximum ballasts for multi-gang installations.

INSTALLING YOUR DIMMER

NOTE: Use check boxes when Steps are completed.

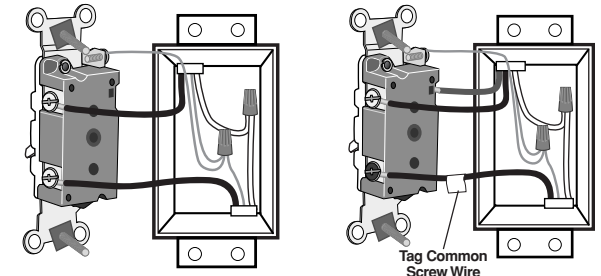
Step 1 **WARNING:** To avoid fire, shock, or death; **TURN OFF POWER** at circuit breaker or fuse and test that power is off before wiring!



Step 2 **Removing existing switch:** Remove existing wallplate and switch mounting screws. Carefully pull switch from wall box. **DO NOT** remove wires attached to the switch at this time.

Step 3 Identifying your wiring application (most common):

NOTE: If the wiring in the wall box does not resemble any of these configurations, consult a qualified electrician.

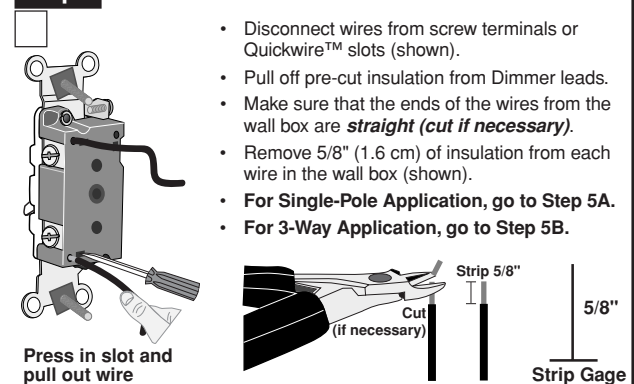


Single-Pole: Look at the back of your switch. If there are 2 wires connected to two screw terminals (not including a green or bare copper wire used for grounding), you have a Single-Pole switch.

3-Way: Look at the back of your switch. If there are 3 wires connected to three screw terminals (not including a green or bare copper wire used for grounding), you have a 3-Way switch. Note that one of the screw terminals will usually be a different color (black) or labeled Common. Tag that wire with electrical tape to identify.

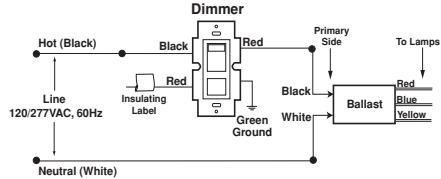
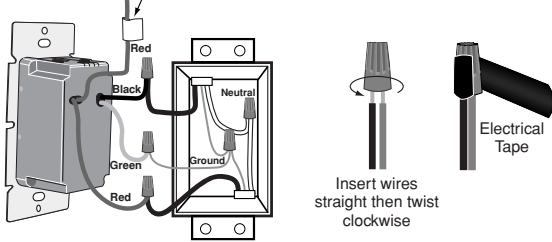
Step 4 Disconnecting switch wires and preparing wires:

- Disconnect wires from screw terminals or Quickwire™ slots (shown).
- Pull off pre-cut insulation from Dimmer leads.
- Make sure that the ends of the wires from the wall box are **straight (cut if necessary)**.
- Remove 5/8" (1.6 cm) of insulation from each wire in the wall box (shown).
- For Single-Pole Application, go to Step 5A.**
- For 3-Way Application, go to Step 5B.**



Step 5a Single-Pole Wiring Application:

This wire is used in 3-way installations only. For single pole installations, do not remove this insulating label.



Connect wires per WIRING DIAGRAM as follows:
Screw wire nuts on clockwise making sure no bare conductors show below the wire connectors. Secure each connector with electrical tape.

NOTE: Dimmer can be installed on either the Load or Line side.

- Green dimmer Ground lead to Green or bare copper wire in wall box.
 - Black dimmer lead to any wall box wire removed from old switch.
 - Red dimmer lead without insulating label to remaining wall box wire. **Proceed to Step 6.**
 - Remaining Red dimmer lead should have Red insulation label affixed. **Proceed to Step 6.**
- NOTE:** If insulating label is not affixed to Red lead, use a small wire nut or electrical tape to cap off. **Proceed to Step 6.**

Step 5b con't

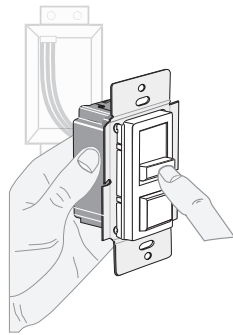
Connect wires per WIRING DIAGRAM as follows:

Screw wire nuts on clockwise making sure no bare conductors show below the wire connectors. Secure each connector with electrical tape.

NOTE: Dimmer can be installed on either the Load or Line side.

- Green dimmer Ground lead to Green or bare copper wire in wall box.
- Black dimmer lead to tagged (common) wall box wire identified when removing old switch.
- Remove Red insulating label from Red lead.
- Any Red dimmer lead to any of the remaining wall box wires.
- Remaining Red dimmer lead to remaining wall box wire.

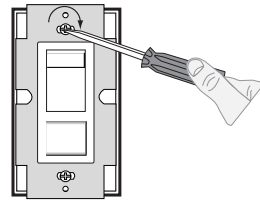
Step 6 Testing your Dimmer prior to mounting in wall box:



- Restore power at circuit breaker or fuse.
- Carefully holding Dimmer as shown, move slider control lever to highest position. Lights should turn ON to brightest level. If lights do not turn ON, depress push-button switch once. Lights should turn ON to brightest level.

If lights still do not turn ON, refer to the TROUBLESHOOTING section.

Step 7 Dimmer Mounting: TURN OFF POWER AT CIRCUIT BREAKER OR FUSE.

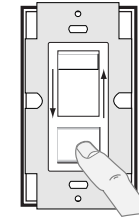


Installation may now be completed by carefully positioning all wires to provide room in wall box for dimmer. Mount dimmer into box with mounting screws supplied. Attach wallplate.

Step 8 Restore Power: Restore power at circuit breaker or fuse. Installation is complete.

OPERATION

NOTE: If using the dimmer in a 3-way application, the lights will turn ON at brightness set on dimmer's slide control lever. The lighting level can be controlled from either the dimmer or the switch location.



ON/OFF:

Depress push-button switch to ON position - Lights will turn ON.

Depress push-button switch to OFF position - Lights will turn OFF.

BRIGHTEN & DIM:

Move slider control lever - Lights will BRIGHTEN or DIM.

TROUBLESHOOTING

- Lights Flickering
 - Lamp has a bad connection.
 - Wires not secured firmly with wire connectors.
- Light does not turn ON and ON/OFF LED does not turn ON
 - Circuit breaker or fuse has tripped.
 - Lamp is burned out.
 - Sockets are not Rapid Start type.
 - Lamp Neutral connection is not wired.

NOTE: If further information is needed in identifying the HOT wire in a 3-Way application, go to *Leviton's website at www.leviton.com.*

For non-standard wiring applications, refer to Wire Nut and Connector Size Chart

WIRE CONNECTOR / # OF COND. COMBINATION CHART

1- #12 w/ 1 to 3 #14, #16 or #18
2- #12 w/ 1 or 2 #16 or #18
1- #14 w/ 1 to 4 #16 or #18
2- #14 w/ 1 to 3 #16 or #18

Cat. No. IPX06-1, 120V, For use with Advance Transformer 120V Mark 10™ Powerline Electronic Ballasts					Cat. No. IPX10-1, 120V, For use with Advance Transformer 120V Mark 10™ Powerline Electronic Ballasts				
Advance Mark 10™ Powerline Part No.	Lamp	Max. # Ballasts/Dimmer for Multi-gang			Advance Mark 10™ Powerline Part No.	Lamp	Max. # Ballasts/Dimmer for Multi-gang		
		Single Gang	Two Ganged	More than 2 Gang			Single Gang	Two Ganged	More than 2 Gang
REZ-1T32	CFM26W/GX24Q	19	16	13	REZ-1T32	CFM26W/GX24Q	32	26	22
REZ-1T32	CFM32W/GX24Q	16	13	10	REZ-1T32	CFM32W/GX24Q	26	21	18
REZ-1T42	CFM42W/GX24Q	12	10	8	REZ-1T42	CFM42W/GX24Q	20	16	14
REZ-2Q26	CFQ26W/G24Q	10	9	7	REZ-2Q26	CFQ26W/24Q	17	14	12
REZ-132	F25T8	19	16	13	REZ-132	F25T8	32	26	22
REZ-2S32	F25T8	10	8	7	REZ-2S32	F25T8	17	13	12
REZ-3S32	F25T8	7	6	5	REZ-3S32	F25T8	11	9	8
REZ-132	F32T8	17	14	11	REZ-132	F32T8	28	22	19
REZ-2S32	F32T8	8	7	6	REZ-2S32	F32T8	14	11	10
REZ-3S32	F32T8	6	5	4	REZ-3S32	F32T8	9	8	7
REZ-1TTS40	FT40W/2G11	15	12	10	REZ-1TTS40	FT40W/2G11	25	20	17
REZ-2TTS40	FT40W/2G11	7	6	5	REZ-2TTS40	FT40W/2G11	12	10	9

Cat. No. IPX06-7, 277V, For use with Advance Transformer 277V Mark 10™ Powerline Electronic Ballasts					Cat. No. IPX12-7, 277V, For use with Advance Transformer 277V Mark 10™ Powerline Electronic Ballasts				
Advance Mark 10™ Powerline Part No.	Lamp	Max. # Ballasts/Dimmer for Multi-gang			Advance Mark 10™ Powerline Part No.	Lamp	Max. # Ballasts/Dimmer for Multi-gang		
		Single Gang	Two Ganged	More than 2 Gang			Single Gang	Two Ganged	More than 2 Gang
VEZ-1T32	CFM26W/GX24Q	20	20	20	VEZ-1T32	CFM26W/GX24Q	39	39	39
VEZ-1T32	CFM32W/GX24Q	15	15	15	VEZ-1T32	CFM32W/GX24Q	31	31	31
VEZ-1T42	CFM42W/GX24Q	12	12	12	VEZ-1T42	CFM42W/GX24Q	24	24	24
VEZ-2Q26	CFQ26W/G24Q	10	10	10	VEZ-2Q26	CFQ26W/G24Q	21	21	21
VEZ-132	F25T8	20	20	20	VEZ-132	F25T8	39	39	39
VEZ-2S32	F25T8	10	10	10	VEZ-2S32	F25T8	20	20	20
VEZ-3S32	F25T8	7	7	7	VEZ-3S32	F25T8	14	14	14
VEZ-132	F32T8	17	17	17	VEZ-132	F32T8	33	33	33
VEZ-2S32	F32T8	8	8	8	VEZ-2S32	F32T8	17	17	17
VEZ-3S32	F32T8	6	6	6	VEZ-3S32	F32T8	11	11	11
VEZ-1TTS40	FT40W/2G11	14	14	14	VEZ-1TTS40	FT40W/2G11	29	29	29
VEZ-2TTS40	FT40W/2G11	7	7	7	VEZ-2TTS40	FT40W/2G11	14	14	14

LIMITED 2 YEAR WARRANTY AND EXCLUSIONS

Leviton warrants to the original consumer purchaser and not for the benefit of anyone else that this product at the time of its sale by Leviton is free of defects in materials and workmanship under normal and proper use for two years from the purchase date. Leviton's only obligation is to correct such defects by repair or replacement, at its option, if within such two year period the product is returned prepaid, with proof of purchase date, and a description of the problem to **Leviton Manufacturing Co., Inc., Attn: Quality Assurance Department, 59-25 Little Neck Parkway, Little Neck, New York 11362-2591**. This warranty excludes and there is disclaimed liability for labor for removal of this product or reinstallation. This warranty is void if this product is installed improperly or in an improper environment, overloaded, misused, opened, abused, or altered in any manner, or is not used under normal operating conditions or not in accordance with any labels or instructions. There are no other or implied warranties of any kind, including merchantability and fitness for a particular purpose, but if any implied warranty is required by the applicable jurisdiction, the duration of any such implied warranty, including merchantability and fitness for a particular purpose, is limited to two years. Leviton is not liable for incidental, indirect, special, or consequential damages, including without limitation, damage to, or loss of use of, any equipment, lost sales or profits or delay or failure to perform this warranty obligation. The remedies provided herein are the exclusive remedies under this warranty, whether based on contract, tort or otherwise.