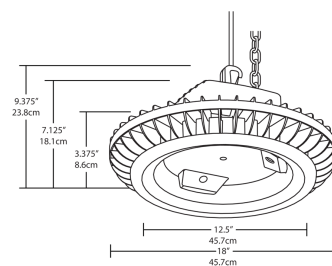
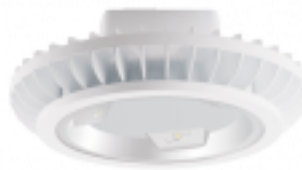


# BAYLED78NW

78W BAYLED high bay replaces 250W MH high bays, reducing energy consumption by 67%. Suitable for large spaces, including warehouses, factories, and distribution centers.

Color: White

Weight: 21.0 lbs



## LED Info

Watts: 78W  
 Color Temp: 4000K (Neutral)  
 Color Accuracy: 84  
 L70 Lifespan: 100000  
 LM79 Lumens: 6,461  
 Efficacy: 69 LPW

## Driver Info

Type: Constant Current  
 120V: 0.82A  
 208V: 0.52A  
 240V: 0.45A  
 277V: 0.4A  
 Input Watts: 93W  
 Efficiency: 84%

## Technical Specifications

### UL Listing:

Suitable for damp locations with cord and hook.  
 Suitable for wet locations with 3/4" pendant stem.  
 Covered ceiling mount only.

### LEDs:

Three multi-chip, 26W high-output, long-life LEDs

### Lifespan:

100,000-hour LED lifespan based on IES LM-80 results and TM-21 calculations

### Drivers (3):

Constant Current, 720mA, Class 2 with 6 KV surge protection, 100-277VAC, 50/60 Hz

### Input Watts:

93

### Output Lumens:

6461

### Lumens per Watt:

69

### Color Accuracy (CRI):

84 CRI

### Correlated Color Temp. (Nominal CCT):

4000K

### Ambient Temperature:

BAYLED will operate from -40&deg;C (-40&deg;F) to 55&deg;C (131&deg;F)

### Thermal Management:

Superior heat sinking with external air-flow fins

### Housing:

Precision die-cast aluminum housing and door frame with 3-foot 600V power cord

### Mounting:

Heavy-duty 3/4" NPS hook and 3 foot safety chain

### Recommended Mounting Height:

25 ft.

### Equivalency:

BAYLED replaces 250 Watt metal halide one-for-one, and is equivalent to 4 lamp T8 fixtures

### Lens:

Tempered glass

### Reflector:

Specular vacuum metallized polycarbonate.

### Gaskets:

High-temperature silicone

### Finish:

Chip and fade resistant polyester powder coat finish

### Color Stability:

RAB LED performance exceeds industry standards for chromatic stability

### Color Uniformity:

RAB's range of CCT (Correlated Color Temperature) follows the guidelines of the American National Standard for Specifications for the Chromaticity of Solid State Lighting (SSL) Products, ANSI C78.377.2011

### Green Technology:

Mercury and UV free, and RoHS compliant



BAYLED78NW - continued

**IESNA LM-79 & LM-80 Testing:**

RAB LED luminaries have been tested by an independent laboratory in accordance with IESNA LM-79 and LM-80, and have received the Department of Energy "Lighting Facts" label

**Patents:**

The design of the BAYLED is protected by patents pending in US, Canada, China, Taiwan and Mexico

**Accessories:**

Available accessories include protective polyshield and wire guards, replacement lens and doorframe, and an occupancy sensor. to see all accessories.

**Country of Origin:**

Designed by RAB in New Jersey and assembled in the USA by RAB's IBEW Local 3 workers.

**Buy American Act Compliant:**

This product is a COTS item manufactured in the United States, and is compliant with the Buy American Act.

**Recovery Act (ARRA) Compliant:**

This product complies with the 52.225-21 "Required Use of American Iron, Steel, and Manufactured Goods-- Buy American Act-- Construction Materials (October 2010)

**Trade Agreements Act Compliant:**

This product is a COTS item manufactured in the United States, and is compliant with the Trade Agreements Act.

**GSA Schedule:**

Suitable in accordance with FAR Subpart 25.4

