

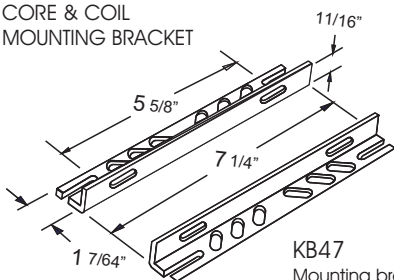
CATALOG NUMBER: E-971-WDD-SO250 FOR ONE 250 WATT, S50 HIGH PRESSURE SODIUM LAMP

Line Voltage	120/208/240/277/480 V
Regulation	
Line Volts	+/-10%
Line Watts	WITHIN TRAPEZOID
Frequency	60 Hz
Circuit Type	CWA
Power Factor (min)	90%
Insulation Class	H(180°)
Min. Ambient Starting Temp.	-40° F or -40° C

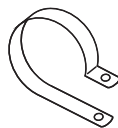
Line Voltage (Volts)	120	208	240	277	480
Line Current (Amps)					
Operating	2.50	1.50	1.30	1.10	0.65
Open Circuit	1.65	0.96	0.80	0.75	0.40
Starting	1.61	0.95	0.81	0.70	0.40
Input Watts (W)	295	295	295	295	295
Open Circuit Voltage (V)	190	190	190	190	190
Drop Out Voltage (V)	83	147	168	187	325
UL(1029) Bench Top Rise	A	A	A	A	A
Recommended Fuse (Amps)	10	4	4	3	2
HIGH POTENTIAL TEST (VOLTS)					
1 Minute	2000				
2 Seconds	2500				
Open Circuit Voltage Test(volts)	175-210				
Short-Circuit Current Test (Amps)					
Secondary Current	4.0 - 4.5				
Input Current (Amps)		1.37 - 0.79 - 0.69 - 0.59 - 0.35 -			
		1.63 0.96 0.83 0.72 0.42			

BRACKET

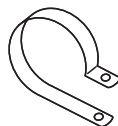
CORE & COIL
MOUNTING BRACKET



KB47
Mounting bracket for
Core & Coil Ballasts
(2 brackets with thru bolts)

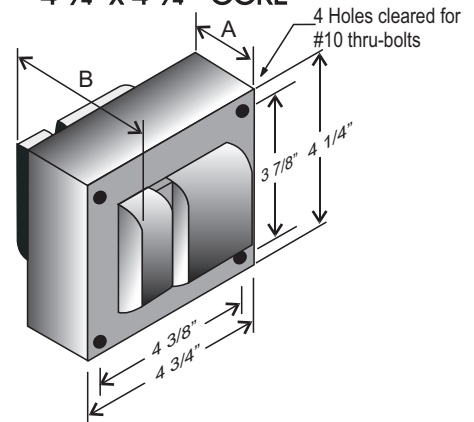


C-01
MOUNTING CLIP for round
case (Furnished as standard
with B suffix ballast)



I-01
MOUNTING CLIP for oval
case (Furnished as standard
with B suffix ballast)

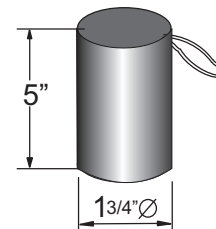
4 1/4" x 4 3/4" CORE



CORE AND COIL

Dimension A (inches)	2.00
Dimension B (inches)	4.00
Weight (Lbs)	12.80
Lead Lengths (inches)	12

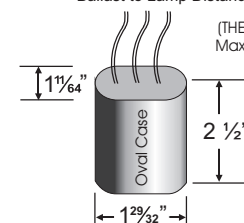
CAPACITOR



RATING
35 Mfd ± 3%
240 VAC MIN
Dry Film Capacitor
Thermal Plastic Case
Max. Case Temp 100° C
NO PCB'S

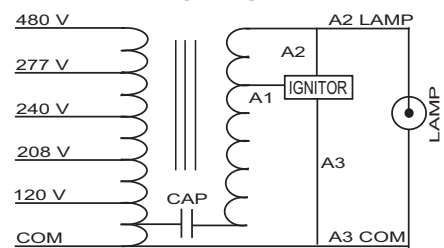
IGNITOR 37-63-AS-6.9-N6

Ballast to Lamp Distance (BTL): 2 feet



(THERMAL PLASTIC CASE)
Max. case Temp: 110° C

WIRING DIAGRAM



120/208/240/277/480 VOLT CONNECTION

ORDERING INFORMATION

*** Add proper suffix to catalog number when ordering as indicated below:

- No suffix = Core and Coil Only
- B = Core and Coil, and Bracket
- C = Core and Coil, and Capacitor
- BC = Core and Coil, Capacitor and Bracket

Data is based upon tests performed by Industrias Sola Basic in a controlled environment and representative of relative performance. Actual Performance can vary depending on operating conditions. Specifications are subject to change without notice.



Lighting & Power Source LP.
2707 Realty Road, Suite 110
Carrollton, TX 75006 USA
Tel: (972) 416-4500
Fax: (972) 418-5858