

# DULUX® S/E

## Compact Fluorescent Lamps



- Dimmable compact fluorescent lamps
- Operates on various ballast systems
  - Flicker free start on electronic ballasts
- Less power consumption than incandescent of comparable light output\*
- High luminous efficacy
- Long 10,000-hour average rated life
  - Reduces relamping requirement and related cost
- Rare earth triphosphor – 82 CRI
- 2700K and 4100K color temperatures
  - 3000K available in 13 Watt lamp only

\* Based on OSRAM SYLVANIA TCLP test protocol.

**SYLVANIA DULUX® S/E compact fluorescent lamps are the equivalent of the DULUX® S lamps without an integrated starter and are designed to operate on electronic ballasts and dimming systems.**

Small tube diameter of 1/2" makes DULUX S/E lamps ideal for creative fixture design and modern lighting systems having comparable light output.

DULUX is a registered trademark of OSRAM GmbH, Germany, used under license by OSRAM SYLVANIA Inc.

### PRODUCT AVAILABILITY

| Lamp Type    | Watts | Rated Lumens |
|--------------|-------|--------------|
| CF5DS/E/800  | 5     | 230          |
| CF7DS/E/800  | 7     | 400          |
| CF9DS/E/800  | 9     | 580          |
| CF13DS/E/800 | 13    | 800          |

### LAMP COMPARISON

| Lamp Type              | Ballast Factor | System Lumens | System Watts | System Efficacy | Energy Savings |
|------------------------|----------------|---------------|--------------|-----------------|----------------|
| One – 90W Incandescent | 1.0            | 1510          | 90           | 17              | —              |
| Two – 13W DULUX S/E    | 0.95           | 1520          | 28           | 54              | 69%            |

### APPLICATION INFORMATION

#### Applications

- Task and down lights
- Wall sconces, recessed and surface ceiling fixtures
- Exit signs, show case and outdoor lighting

#### Notes

- Minimum starting temperature depends on ballast used
- May be operated on electronic ballasts, dimming ballasts and preheat magnetic ballasts with external starter switch
- Equipment manufacturers are advised to consult the relevant ANSI and IEC standards for the maximum allowable dimensions and temperature to insure compatibility with similar products

# ORDERING AND SPECIFICATION INFORMATION

Package Quantity = 50

| Item Number | Ordering Abbreviation | NEMA Generic Designation | Base | Watts | Volts* | Amps* | Initial Lumens | Mean Lumens | Color Temp. | CRI | Av. Rated Life (hrs.) |
|-------------|-----------------------|--------------------------|------|-------|--------|-------|----------------|-------------|-------------|-----|-----------------------|
| 20311       | CF5DS/E/827           | CFT5W/2G7/827            | 2G7  | 5     | 27     | .190  | 230            | 207         | 2700K       | 82  | 10000                 |
| 20315       | CF5DS/E/841           | CFT5W/2G7/841            | 2G7  | 5     | 27     | .190  | 230            | 207         | 4100K       | 82  | 10000                 |
| 20312       | CF7DS/E/827           | CFT7W/2G7/827            | 2G7  | 7     | 48     | .175  | 400            | 360         | 2700K       | 82  | 10000                 |
| 20316       | CF7DS/E/841           | CFT7W/2G7/841            | 2G7  | 7     | 48     | .175  | 400            | 360         | 4100K       | 82  | 10000                 |
| 20313       | CF9DS/E/827           | CFT9W/2G7/827            | 2G7  | 9     | 48     | .170  | 580            | 522         | 2700K       | 82  | 10000                 |
| 20317       | CF9DS/E/841           | CFT9W/2G7/841            | 2G7  | 9     | 48     | .170  | 580            | 522         | 4100K       | 82  | 10000                 |
| 20314       | CF13DS/E/827          | CFT13W/2GX7/827          | 2GX7 | 13    | 46     | .170  | 800            | 720         | 2700K       | 82  | 10000                 |
| 20284       | CF13DS/E/830          | CFT13W/2GX7/830          | 2GX7 | 13    | 46     | .255  | 800            | 720         | 3000K       | 82  | 10000                 |
| 20318       | CF13DS/E/841          | CFT13W/2GX7/841          | 2GX7 | 13    | 46     | .255  | 800            | 720         | 4100K       | 82  | 10000                 |

\*@ 25 KHz

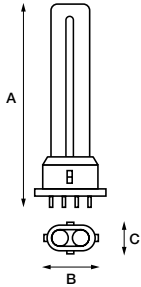
## SAMPLE SPECIFICATION

Lamp(s) shall be (a) DULUX S/E (CF5DS/E, CF7DS/E, CF9DS/E or CF13DS/E) compact fluorescent lamp(s). Lamp(s) shall have a correlated color temperature of (2700K, 3000K or 4100K) and CRI of 82. Lamps shall have a 4-pin (2G7, 2GX7 base with no internal starter.

## ORDERING GUIDE

|                     |                               |                |          |            |          |            |                                                      |
|---------------------|-------------------------------|----------------|----------|------------|----------|------------|------------------------------------------------------|
| <b>CF</b>           | <b>5</b>                      | <b>DS</b>      | <b>/</b> | <b>E</b>   | <b>/</b> | <b>8</b>   | <b>27</b>                                            |
| Compact Fluorescent | Wattage: 5, 7, 9 and 13 watts | DULUX S Single |          | Electronic |          | 8 = 82 CRI | 27 = 2700K<br>30 = 3000K<br>35 = 3500K<br>41 = 4100K |

## DIMENSIONS

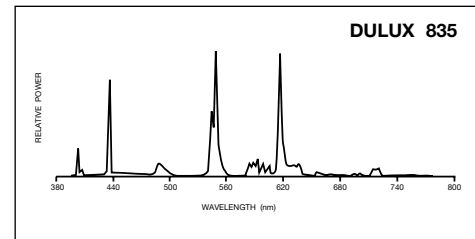
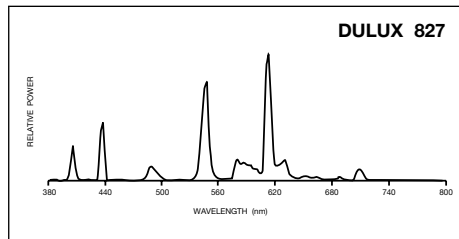
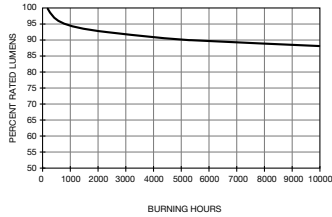


| Ordering Abbreviation | (A) MOL [in (mm)] | (B) Max. Base Length [in (mm)] | (C) Max. Base Width [in (mm)] |
|-----------------------|-------------------|--------------------------------|-------------------------------|
| CF5DS/E               | 3.35 (85)         | 1.50 (38)                      | 0.83 (21.0)                   |
| CF7DS/E               | 4.53 (115)        | 1.50 (38)                      | 0.83 (21.0)                   |
| CF9DS/E               | 5.71 (145)        | 1.50 (38)                      | 0.83 (21.0)                   |
| CF13DS/E              | 6.18 (157)        | 1.50 (38)                      | 0.83 (21.0)                   |

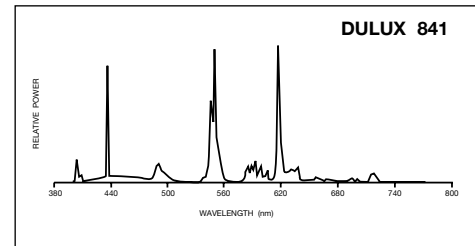
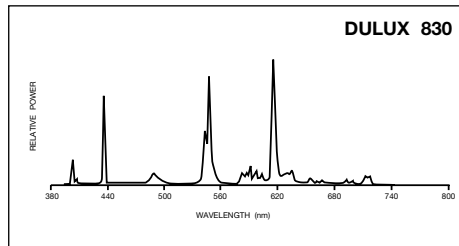
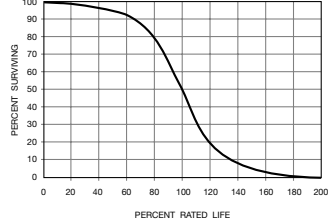
T4 Diameter Tubing = 0.5 inches (12.7mm)

## TECHNICAL INFORMATION

**Lumen Maintenance Curve**  
DULUX S, S/E, D, D/E, T & T/E



**Typical Fluorescent Lamp Mortality**



## FOR ORDERS AND GENERAL INFORMATION

OSRAM SYLVANIA National Customer Support Center, 18725 N. Union Street, Westfield, IN 46074

### Industrial & Commercial

Phone: 1-800-562-4671  
Fax: 1-800-255-5043

### National Accounts

Phone: 1-800-762-7191  
Fax: 1-800-562-4674

### Special Markets

Phone: 1-800-762-7191  
Fax: 1-800-762-7192

In Canada: OSRAM SYLVANIA LTD. Headquarters, 2001 Drew Road, Mississauga, ON L5S 1S4

### Industrial & Commercial

Phone: 1-800-263-2852  
Fax: 1-800-667-6772

### Special Markets

Phone: 1-800-265-2852  
Fax: 1-800-667-6772