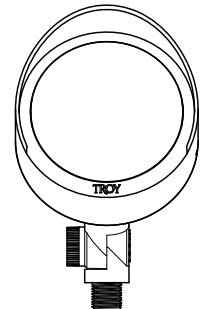
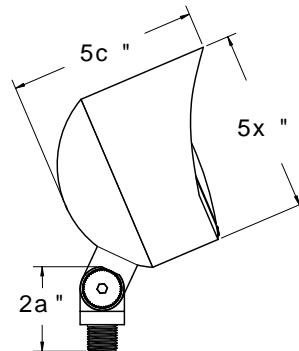




- PAR36 lamp (35W, WFL included)
- Solid die-cast brass
- ½" NPS knuckle with ABS stake included for quick installation
- Uses PAR36 screw terminal lamps
- Large easy to adjust knuckle (can be tightened with a ¼" hex key)
- Potted knuckle to limit water and insect intrusion into luminaire
- 12 volt UL 1838 listed luminaire is safe for wet locations up to 50W
- Natural antique bronze patina finish (NAZ) standard
- Honey comb anti-glare filter included
- Adjustable shroud is lockable with hex key (included)
- 25' of 16 AWG SPT-2W cable and direct-bury wire connectors included
- Optional cast brass or powder coated cast aluminum stake
- Requires low voltage power supply, ordered separately

Solid Brass knuckle is easily adjustable and may be secured with a hex key. The knuckle is potted to limit moisture and insect intrusion.



Model	Material	Lamp	Natural Finishes	Powder Coat
R-F136	B Solid Brass	PAR36 2000 hr, 35W WFL included	NAZ NAP	PAB PBZ
			NAR NAS	PDV POC
			NOC UFB	PRI PSD
			NFC	PTB PWB
			PTW	

OPTIONAL PARTS

MODEL NO	DESCRIPTION
R-A3A	Aluminum Stake Powder Coat
R-A3B	Natural Solid Brass Stake

R-F136B - NAZ

MODEL NO	MATERIAL	FINISH
	B=Brass	Natural Antique Bronze

*We reserve the right to change specifications without notice.

Natural Patinas

Natural Antique Bronze (NAZ) is the Standard finish. Other Natural Patina finished and Powder Coat finishes are available for an extra charge.

Troy Landscape Lighting Natural Patinas are chemically etched finishes available on Solid Brass and Solid Copper fixtures only. chemical etching accelerates the natural aging and weathering that copper and brass experience when used outdoors. These finishes will continue to develop and richen over time. They begin with an "N". Unfinished Brass and Unfinished Copper are just as described - unfinished. The metal will oxidize and darken with age.

Powder Coat Finishes

Troy Landscape Lighting powder coat finish colors are available on all fixtures for an additional charge. The powder coat finish is baked on at 400° over a primer pre-coat for both chip and weather resistance. All powder coat finishes begin with a "P".

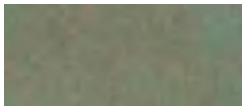
Standard Finish on Solid Brass



NAZ

Natural Antique Bronze

Natural Patina Finishes on Solid Brass



NAP

Natural Autumn Patina



NAR

Natural Rust



NAS

Natural Antique Brass



NOC

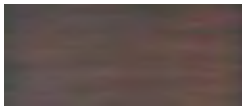
Natural Old Copper



UFB

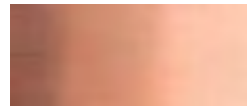
Unfinished Brass

Natural Patina Finishes on Solid Copper



NOC

Natural Old Copper

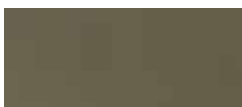


UFC

Unfinished Copper

**COPPER
AVAILABLE ON
LIMITED MODELS -
SEE INDEX**

Powder Coat Finishes All Metal Fixtures



PAB

Aged Bronze



PBZ

Bronze



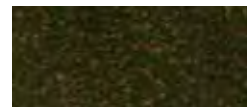
PDV

Dark Verdi



POC

Old Copper



PRI

Rusty Iron



PSD

Sand



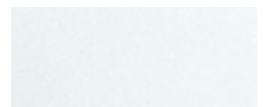
PTB

Textured Black



PWB

Textured Weathered Brown



PTW

Textured White

*We reserve the right to change specifications without notice.