

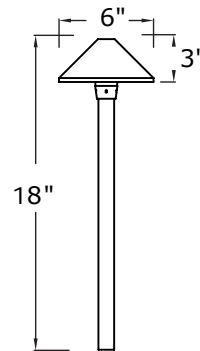


TROY
Landscape Lighting
A Division of Troy-CSL Lighting, Inc.

ULTRA-E LED™ PATH LIGHT R-G241



- 3 watt high power LED, 3.2 watt energy consumption
- 50,000 hour rated life
- LED with integral internal driver, replaceable lamp
- 3,000°K color temperature
- 5 foot light circle with standard riser
- 7/8" dia. solid brass riser
- Suitable for use with standard landscape transformers
- More fixtures per run, lower wattage transformer requirement
- Bi-pin type G4/GU5.3 with stainless steel spring.
- Solid Brass
- Optical acrylic lens
- 25' of 18 AWG SPT-2W cable and direct-bury wire connectors included
- Requires low voltage power supply, ordered separately
- Shipped w/ Quick-Stake and Gel Connectors



R-A3A



R-A3B

OPTIONAL PARTS

MODEL NO	DESCRIPTION
R-A3A	Aluminum Stake Powder Coat
R-A3B	Natural Solid Brass Stake

R-G241B - NAZ

MODEL NO MATERIAL FINISH

B=Brass Natural Antique Bronze

Model	Material	Socket/Lamp	Natural Finishes		Powder Coat	
R-G241	B	Solid Brass G4/GU5.3 LED	NAP	NAR	PAB	PBZ
			NAS	NAZ	PDV	POC
			NOC	UFB	PRI	PSD
					PTB	PWB
				PTW		

*We reserve the right to change specifications without notice.

Natural Patinas

Natural Antique Bronze (NAZ) is the Standard finish. Other Natural Patina finished and Powder Coat finishes are available for an extra charge.

Troy Landscape Lighting Natural Patinas are chemically etched finishes available on Solid Brass and Solid Copper fixtures only. chemical etching accelerates the natural aging and weathering that copper and brass experience when used outdoors. These finishes will continue to develop and richen over time. They begin with an "N". Unfinished Brass and Unfinished Copper are just as described - unfinished. The metal will oxidize and darken with age.

Powder Coat Finishes

Troy Landscape Lighting powder coat finish colors are available on all fixtures for an additional charge. The powder coat finish is baked on at 400° over a primer pre-coat for both chip and weather resistance. All powder coat finishes begin with a "P".

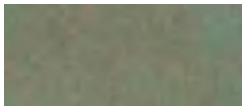
Standard Finish on Solid Brass



NAZ

Natural Antique Bronze

Natural Patina Finishes on Solid Brass



NAP

Natural Autumn Patina



NAR

Natural Rust



NAS

Natural Antique Brass



NOC

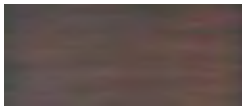
Natural Old Copper



UFB

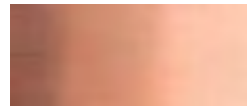
Unfinished Brass

Natural Patina Finishes on Solid Copper



NOC

Natural Old Copper

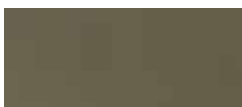


UFC

Unfinished Copper

**COPPER
AVAILABLE ON
LIMITED MODELS -
SEE INDEX**

Powder Coat Finishes All Metal Fixtures



PAB

Aged Bronze



PBZ

Bronze



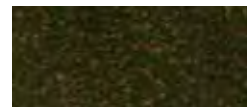
PDV

Dark Verdi



POC

Old Copper



PRI

Rusty Iron



PSD

Sand



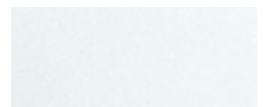
PTB

Textured Black



PWB

Textured Weathered Brown



PTW

Textured White

*We reserve the right to change specifications without notice.