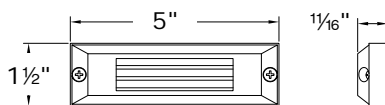




R-S11 is a unique flush mount step light that does not require a large wall cut-out

- 3.5 watt LED
- 3000°K color temperature
- On-board driver
- Surface mount
- Solid Brass housing
- Heat and impact resistant glass
- 100% sealed luminaire for high exposure areas
- 25' of 18awg SPT2-W cable and direct-bury wire connectors included
- Requires low voltage power supply, ordered separately



## R-S11B - NAZ

| MODEL NO | MATERIAL | FINISH                 |
|----------|----------|------------------------|
|          | B=Brass  | Natural Antique Bronze |

| Model | Material      | Lamp      | Natural Finishes |     | Powder Coat |     |
|-------|---------------|-----------|------------------|-----|-------------|-----|
|       |               |           |                  |     |             |     |
| R-S11 | B Solid Brass | LED 3.5 W | NAP              | NAR | PAB         | PBZ |
|       |               |           | NAS              | NAZ | PDV         | POC |
|       |               |           | NOC              | UFB | PRI         | PSD |
|       |               |           |                  |     | PTB         | PWB |
|       |               |           |                  |     | PTW         |     |

\*We reserve the right to change specifications without notice.

## Natural Patinas

**Natural Antique Bronze (NAZ) is the Standard finish. Other Natural Patina finished and Powder Coat finishes are available for an extra charge.**

Troy Landscape Lighting Natural Patinas are chemically etched finishes available on Solid Brass and Solid Copper fixtures only. chemical etching accelerates the natural aging and weathering that copper and brass experience when used outdoors. These finishes will continue to develop and richen over time. They begin with an "N". Unfinished Brass and Unfinished Copper are just as described - unfinished. The metal will oxidize and darken with age.

## Powder Coat Finishes

Troy Landscape Lighting powder coat finish colors are available on all fixtures for an additional charge. The powder coat finish is baked on at 400° over a primer pre-coat for both chip and weather resistance. All powder coat finishes begin with a "P".

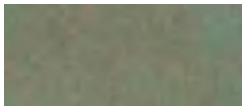
## Standard Finish on Solid Brass



**NAZ**

Natural Antique Bronze

## Natural Patina Finishes on Solid Brass



**NAP**

Natural Autumn Patina



**NAR**

Natural Rust



**NAS**

Natural Antique Brass



**NOC**

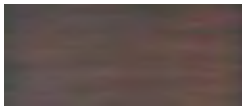
Natural Old Copper



**UFB**

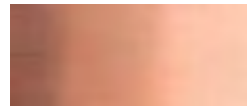
Unfinished Brass

## Natural Patina Finishes on Solid Copper



**NOC**

Natural Old Copper

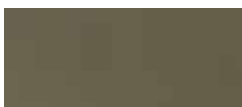


**UFC**

Unfinished Copper

**COPPER  
AVAILABLE ON  
LIMITED MODELS -  
SEE INDEX**

## Powder Coat Finishes All Metal Fixtures



**PAB**

Aged Bronze



**PBZ**

Bronze



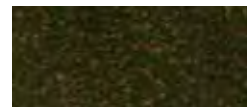
**PDV**

Dark Verdi



**POC**

Old Copper



**PRI**

Rusty Iron



**PSD**

Sand



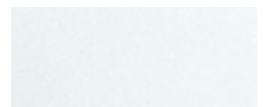
**PTB**

Textured Black



**PWB**

Textured Weathered Brown



**PTW**

Textured White

\*We reserve the right to change specifications without notice.