

# RS Series Passive Infrared (PIR) Universal Application Wall Switch Vacancy Sensors



PROJECT
LOCATION/TYPE

## Product Overview

### Description

RS Series PIR Universal Application Wall Switch Vacancy Sensors replace standard wall switches. A variety of models provide different features to offer convenient, cost-effective energy savings throughout the home.

### Operation

RS Series Universal Application Vacancy Sensors use PIR technology to sense the difference between infrared energy from a person in motion and the background space to detect when a space becomes vacant. They operate as vacancy sensors when utilizing the preset factory setting for manual-on operation. When programmed for automatic-on operation, they operate as occupancy sensors.

A setup button and two adjustment trimpots are conveniently located behind the on/off button and allow for a variety of additional control options such as manual or automatic-on, time delay and light level sensing.

## Features

- Replaces standard light or fan single pole switch (RS-250 and RS-250-N)
- No leakage to load in off mode for safety
- Low-profile styling with uniform color-matched lens and device in four decorator colors
- Manual- or automatic-on operation
- Adjustable time delay 15 seconds to 30 minutes
- Lighted switch for visibility in darkened rooms
- California Title 24 compliant

### Optional Dual Relay Model

The RS-350 and RS-350-N include dual relays for control of two different loads from a single location. Each pushbutton offers manual on/off control. Each relay offers independently selectable manual-on or automatic-on operation. The light level sensing capability is available on the first relay only.

### Applications

RS Universal Application Sensors can be used in every room in a residence. Homeowners can select appropriate on/off mode, time delay and light level settings to maximize potential energy savings without compromising comfort or convenience. The RS-250 can be used in any space where residents want to select a specific time delay and daylight contributions are significant. The RS-350 is ideal for spaces where simultaneous control of two different loads from a single location is desired, e.g., in a bathroom to control the light and exhaust fan. For applications such as bedrooms and bathrooms where a nightlight is desired, the RS-250-N and RS-350-N with built-in nightlight illuminate the space when lighting is off.

- Works with most common residential lighting types
- Light level sensing prevents automatic-on of lights when adequate daylight exists
- Contains two relays to control two independent lighting loads or circuits; primary relay can be controlled by daylight, whereas secondary relay is isolated (RS-350 and RS-350-N)
- Amber LED nightlight illuminates whenever overhead lights are off (RS-250-N/RS-350-N)

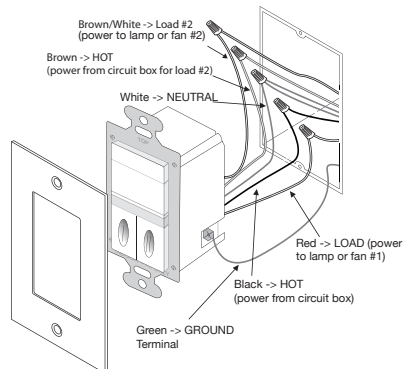


## Specifications

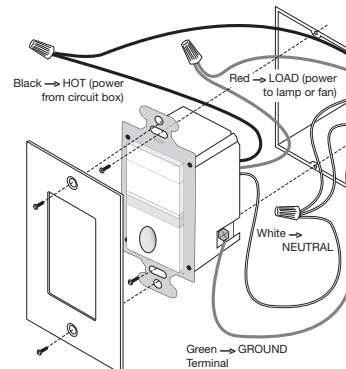
- 120 VAC, 60 Hz
- Load requirements: 0-600W incandescent, fluorescent, compact fluorescent (CFL), magnetic low voltage (MLV), electronic low voltage (ELV), and 1/6 hp
- Neutral required
- Coverage: 180°, max.600 ft<sup>2</sup> (56m<sup>2</sup>)
- Adjustable light level setting from 10-150 fc (100-1500 lux) (relay #1 only)
- Adjustable time delay from 15 seconds to 30 minutes
- 2.63" x 1.69" x 1.88" (67.8mm x 42.9mm x 47.8mm) L x W x D
- UL and CUL listed; five-year warranty

## Installation & Wiring

### Wiring for RS-350 and RS-350-N

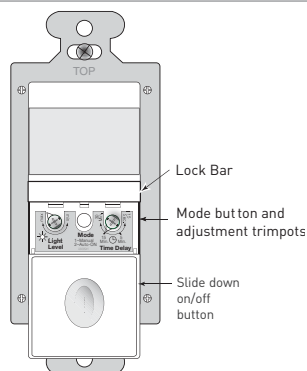


### Wiring for RS-250 and RS-250-N



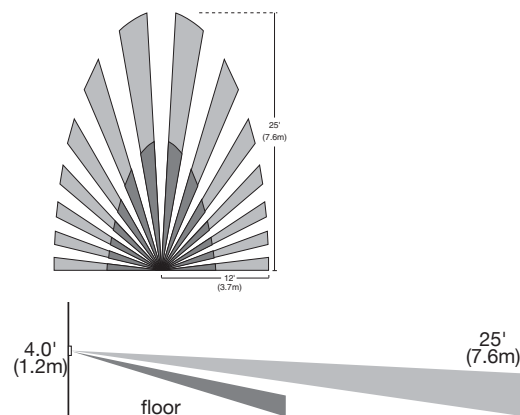
## Controls & Coverage

### RS-250 & RS-250-N Controls



To access mode button and adjustment trimpots, gently pull the lock bar away from the switch face and slide the on/off button down.

### Coverage



## Ordering Information

Catalog No.	Color	Special Feature	Voltage	Load Requirement	Coverage
<input type="checkbox"/> RS-250-W	White		120 VAC, 60 Hz	0-600W incandescent, fluorescent, CFL, MLV, ELV, 1/6 hp	180°, max.600 ft <sup>2</sup> (56m <sup>2</sup> )
<input type="checkbox"/> RS-250-I	Ivory				
<input type="checkbox"/> RS-250-LA	Lt. Almond				
<input type="checkbox"/> RS-250-B	Black				
<input type="checkbox"/> RS-250-N-W	White	Nightlight			
<input type="checkbox"/> RS-250-N-I	Ivory				
<input type="checkbox"/> RS-250-N-LA	Lt. Almond				
<input type="checkbox"/> RS-250-N-B	Black				
<input type="checkbox"/> RS-350-W	White	Dual Relay			
<input type="checkbox"/> RS-350-I	Ivory				
<input type="checkbox"/> RS-350-LA	Lt. Almond				
<input type="checkbox"/> RS-350-B	Black				
<input type="checkbox"/> RS-350-N-W	White	Dual Relay with Nightlight			
<input type="checkbox"/> RS-350-N-I	Ivory				
<input type="checkbox"/> RS-350-N-LA	Lt. Almond				
<input type="checkbox"/> RS-350-N-B	Black				

One ASP-211 Single-gang Decorator Cover Plate included. Order ASP-422 for Two-gang Decorator Cover Plate with Blank Option, or ASP-432 for Two-gang Decorator Cover Plate with Toggle Switch Option.