



Commercial Products & Solutions

30900

[SITE SEARCH](#)[» HOME](#)[» PRODUCTS](#)[» EDUCATION / RESOURCES](#)[» LIGHTING APPLICATIONS](#)[Where to Buy](#) | [FAQs](#) | [Contact Us](#) | [EliteNet](#)[Products](#) > [Halogen](#) > [MR](#) > 30901**30901 – 50MR16/Q/10/TL**

GE MR16

**GENERAL CHARACTERISTICS**

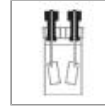
Lamp type	Halogen - MR
Bulb	MR16
Base	Turn and Lock (GU7)
Filament	C-6
Wattage	50
Voltage	12
Rated Life	3500 hrs
Lamp Enclosure Type (LET)	Covered glass



Bulb



Base



Filament

[View Larger](#)**PHOTOMETRIC CHARACTERISTICS**

Center Beam Candlepower (CBCP)	10800
Color Temperature	3000 K
Nominal Initial Lumens per Watt	216

ADDITIONAL RESOURCES[Catalogs](#)[Testimonials](#)[IES/Photometric Download](#)[MSDS \(Material Safety Data Sheets\)](#)[Disposal Policies & Recycling Information](#)**DIMENSIONS**

Maximum Overall Length (MOL)	2.000 in (50.8 mm)
Bulb Diameter (DIA)	2.000 in (50.8 mm)

PRODUCT INFORMATION

Product Code	30901
Description	50MR16/Q/10/TL
Standard Package	Case
Standard Package GTIN	00043168309011
Standard Package Quantity	10
Sales Unit	Unit
No Of Items Per Sales Unit	1
No Of Items Per Standard Package	10
UPC	043168994491

⚠ CAUTIONS & WARNINGS[See list of cautions & warnings.](#)[Return To Top](#)

[Home](#) | [Products](#) | [EliteNet](#) | [Education/Resources](#) | [Lighting Applications](#) | [Where to Buy](#) | [FAQs](#) | [Contact Us](#) | [Site Map](#)
[Products for Your Home](#) | [Press Room](#) | [Corporate](#) | [Investor Information](#) | [Privacy Policy](#) | [Accessibility Statement](#) | [Terms of Use](#)

Copyright General Electric Company 1997-2008