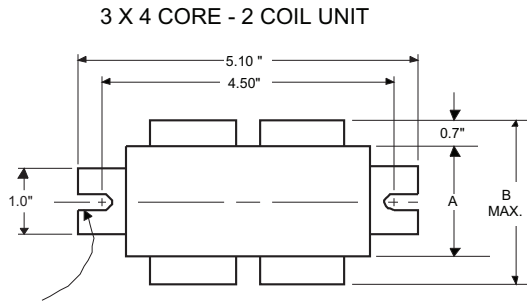
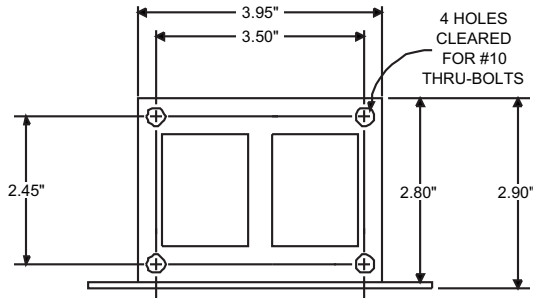


**DIMENSIONS AND DATA**



0.25" WIDE  
2 SLOTS



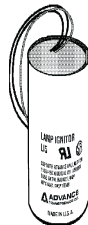
| INPUT VOLTS  |                  | 120  | 208  | 240  | 277  |
|--|------------------|------|------|------|------|
| CIRCUIT TYPE   | HX-HPF           |      |      |      |      |
| POWER FACTOR (min)   | 90%              |      |      |      |      |
| REGULATION   |                  |      |      |      |      |
| Line Volts   | ±5%              |      |      |      |      |
| Lamp Watts   | WITHIN TRAPEZOID |      |      |      |      |
| LINE CURRENT (Amps)  |                  |      |      |      |      |
| Operating.....   |                  | 0.81 | 0.47 | 0.40 | 0.35 |
| Open Circuit.....  |                  | 1.45 | 0.85 | 0.75 | 0.65 |
| Starting.....  |                  | 0.75 | 0.45 | 0.37 | 0.35 |
| UL TEMPERATURE RATINGS   |                  |      |      |      |      |
| Insulation Class   | H(180°C)         |      |      |      |      |
| Coil Temperature Code  | 1029             |      |      |      |      |
| MIN. AMBIENT STARTING TEMP.  | -40°F or -40°C   | B    | C    | B    | C    |
| NOM. OPEN CIRCUIT VOLTAGE  | 120              |      |      |      |      |
| INPUT VOLTAGE AT LAMP DROPOUT.....   |                  | 96   | 166  | 192  | 222  |
| INPUT WATTS  | 91               |      |      |      |      |
| RECOMMENDED FUSE (Amps).....   |                  | 5    | 3    | 2    | 2    |
| CORE and COIL  |                  |      |      |      |      |
| Dimension (A)  | 1.50             |      |      |      |      |
| Dimension (B)  | 3.10             |      |      |      |      |
| Weight (lbs.)  | 5.5              |      |      |      |      |
| Lead Lengths   | 12"              |      |      |      |      |
| CAPACITOR REQUIREMENT  |                  |      |      |      |      |
| Microfarads  | 7.0              |      |      |      |      |
| Volts (min.)   | 280              |      |      |      |      |
| Fault Current Withstand (amps)   |                  |      |      |      |      |
| 60 Hz TEST PROCEDURES (Refer to Philips Lighting Electronics N.A. TEST Procedure for HID Ballasts - Form High Potential Test (Volts) |                  |      |      |      |      |
| 1 minute   | 2000             |      |      |      |      |
| 2 seconds  | 2500             |      |      |      |      |
| Open Circuit Voltage Test (Volts)  | 110-130          |      |      |      |      |
| Short-Circuit Current Test (Amps)  |                  |      |      |      |      |
| Secondary Current  | 1.80-2.20        |      |      |      |      |
| Input Current.....   |                  | 0.60 | 0.35 | 0.30 | 0.25 |
|  |                  | 0.95 | 0.60 | 0.50 | 0.40 |

Capacitor: 7C070L33-R



Capacitance: 7  
Dia/Oval Dim: 1.25  
Height: 2.9  
Temp Rating: 105°C

Ignitor: LI551-H4



Ballast to Lamp Distance  
(BTL) = 2 feet  
Temp Rating: 105°C



**Wiring Diagram:**

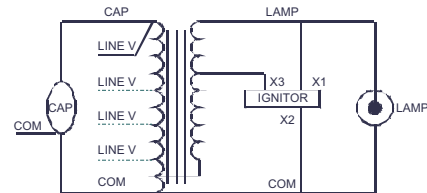


Fig. K3

**Typical Ordering Information**

(please call Philips Lighting Electronics N.A. for suffix availability)

| Order Suffix | Description |
|--------------|-------------|
|--------------|-------------|

Data is based upon tests performed by Philips Lighting Electronics N.A. in a controlled environment and is representative of relative performance. Actual performance can vary depending on operating conditions. Specifications are subject to change without notice.

**PHILIPS LIGHTING ELECTRONICS N.A.**

10275 WEST HIGGINS ROAD · ROSEMONT, IL 60018

Tel: 800-322-2086 · Fax: 888-423-1882 · www.philips.com/advance

Customer Support/Technical Service: 800-372-3331 · OEM Support: 866-915-5886

Revised: 05/16/03