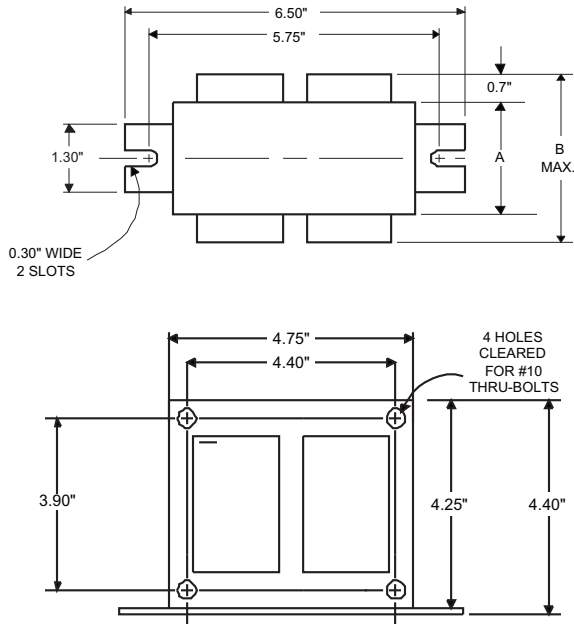


DIMENSIONS AND DATA

4 1/4 X 4 3/4 CORE - 2 COIL UNIT



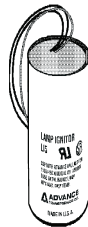
		120	208	240	277	480
INPUT VOLTS						
CIRCUIT TYPE	CWA					
POWER FACTOR (min)	93%					
REGULATION						
Line Volts	±10%					
Lamp Watts	±10%					
LINE CURRENT (Amps)						
Operating.....		2.65	1.51	1.32	1.18	0.66
Open Circuit.....		1.83	1.02	0.92	0.89	0.45
Starting.....		1.40	0.74	0.72	0.59	0.36
UL TEMPERATURE RATINGS						
Insulation Class	H(180°C)					
Coil Temperature Code	1029					
MIN. AMBIENT STARTING TEMP.	-40°F or -40°C	B	B	B	B	B
NOM. OPEN CIRCUIT VOLTAGE	185					
INPUT VOLTAGE AT LAMP DROPOUT.....		83	147	168	187	323
INPUT WATTS	300					
RECOMMENDED FUSE (Amps).....		10	4	4	3	2
CORE and COIL						
Dimension (A)	1.95					
Dimension (B)	3.55					
Weight (lbs.)	12					
Lead Lengths	12"					
CAPACITOR REQUIREMENT						
Microfarads	35.0					
Volts (min.)	240					
Fault Current Withstand (amps)						
60 Hz TEST PROCEDURES (Refer to Philips Lighting Electronics N.A. TEST Procedure for HID Ballasts - Form High Potential Test (Volts)						
1 minute	2000					
2 seconds	2500					
Open Circuit Voltage Test (Volts)	167-203					
Short-Circuit Current Test (Amps)	3.66-4.47					
Secondary Current						
Input Current.....		0.76	0.44	0.37	0.30	0.19
		1.15	0.67	0.56	0.45	0.28

Capacitor: 7C350P24



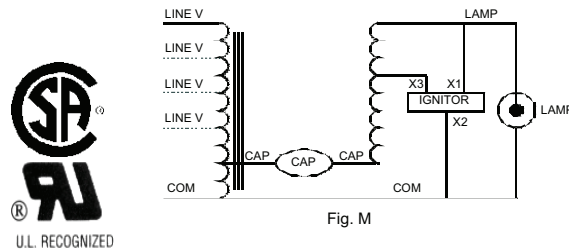
Capacitance: 35
 Dia/Oval Dim: 1.75
 Height: 3.75
 Temp Rating: 105°C

Ignitor: LI501-H4



Ballast to Lamp Distance
 (BTL) = 2 feet
 Temp Rating: 105°C

Wiring Diagram:



Typical Ordering Information

(please call Philips Lighting Electronics N.A. for suffix availability)

Order Suffix	Description
--------------	-------------

Data is based upon tests performed by Philips Lighting Electronics N.A. in a controlled environment and is representative of relative performance. Actual performance can vary depending on operating conditions. Specifications are subject to change without notice.

PHILIPS LIGHTING ELECTRONICS N.A.

10275 WEST HIGGINS ROAD · ROSEMONT, IL 60018

Tel: 800-322-2086 · Fax: 888-423-1882 · www.philips.com/advance

Customer Support/Technical Service: 800-372-3331 · OEM Support: 866-915-5886

Revised: 12/05/01