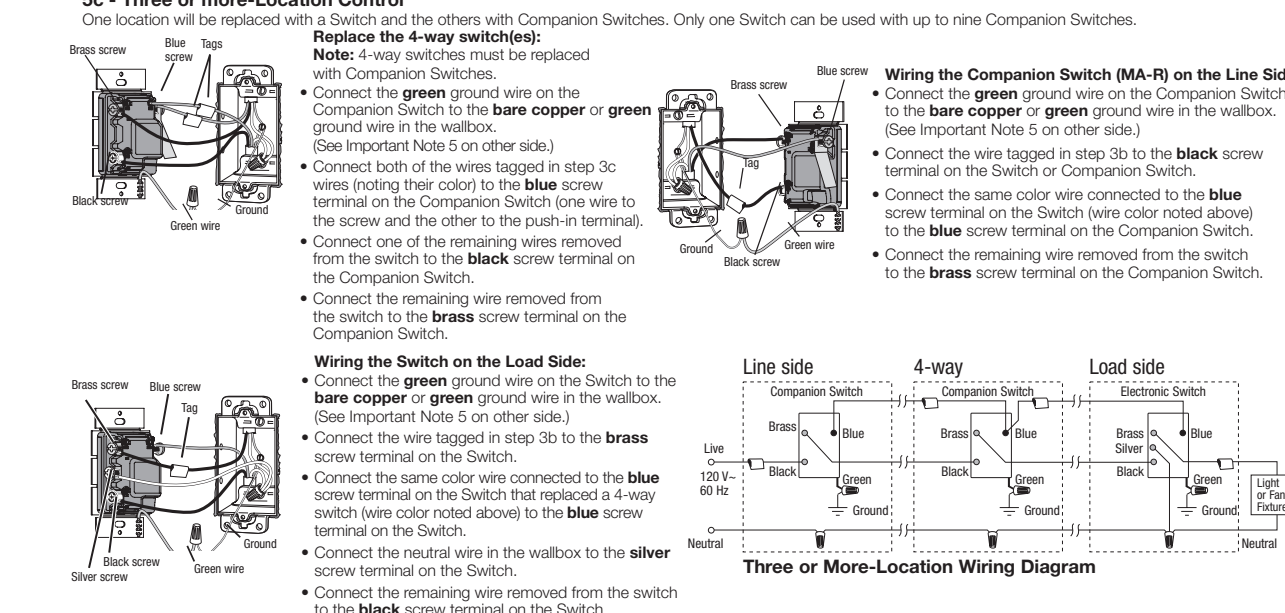
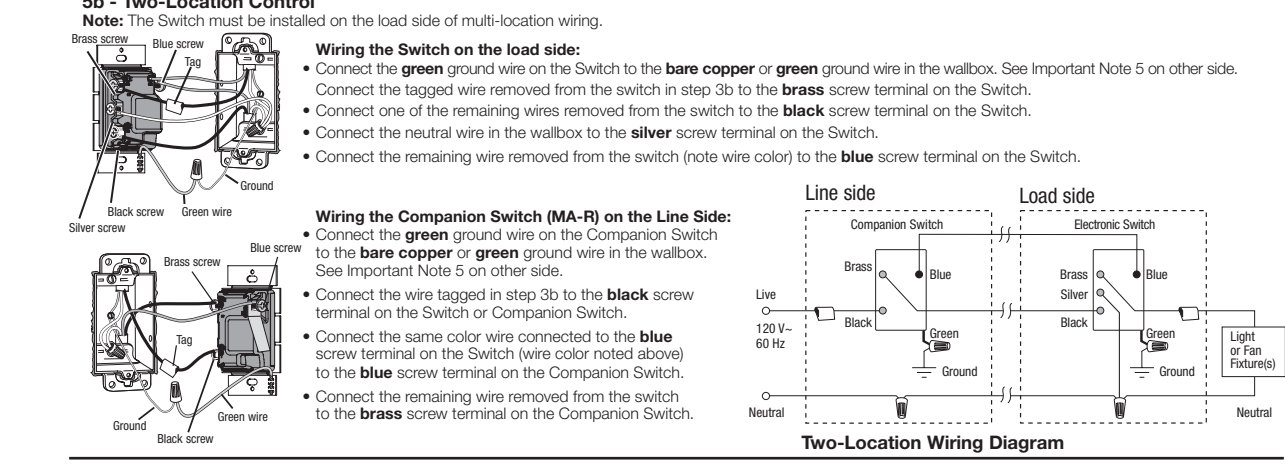
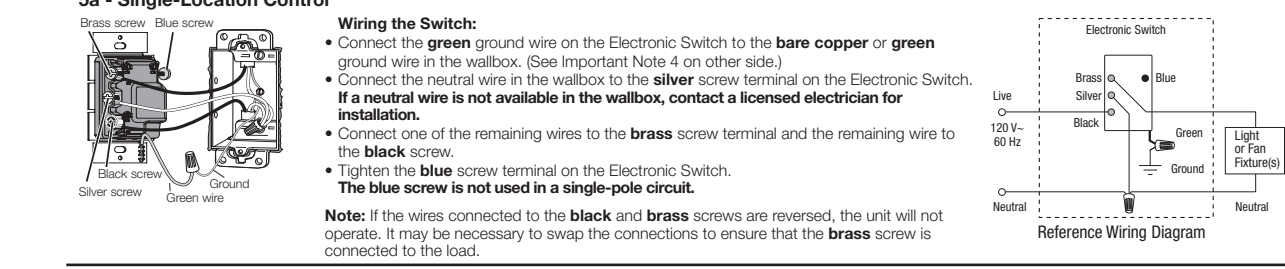
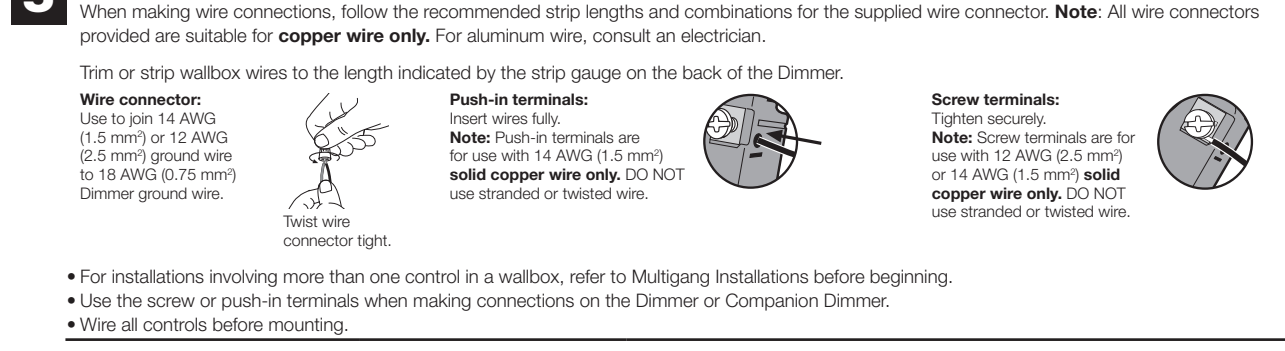
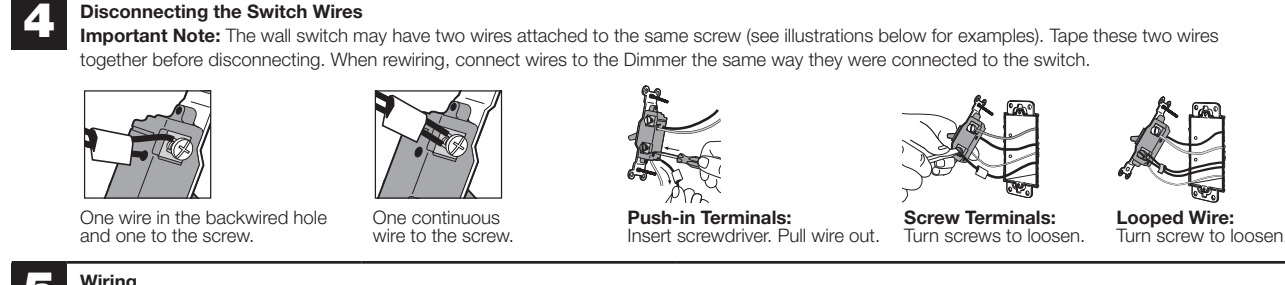
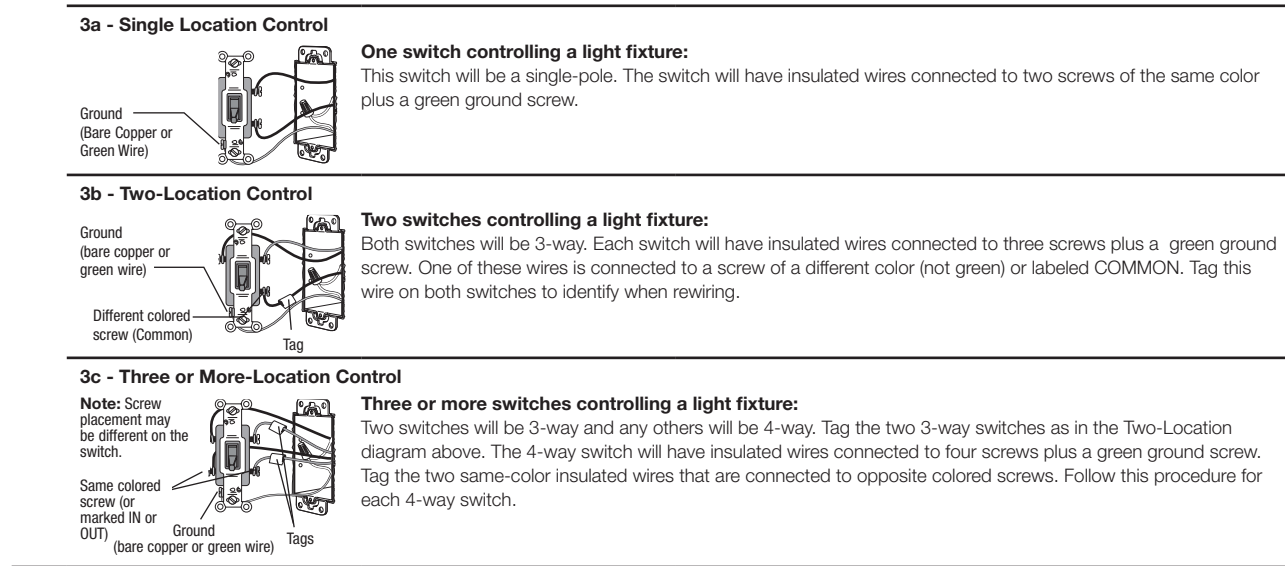




Installation

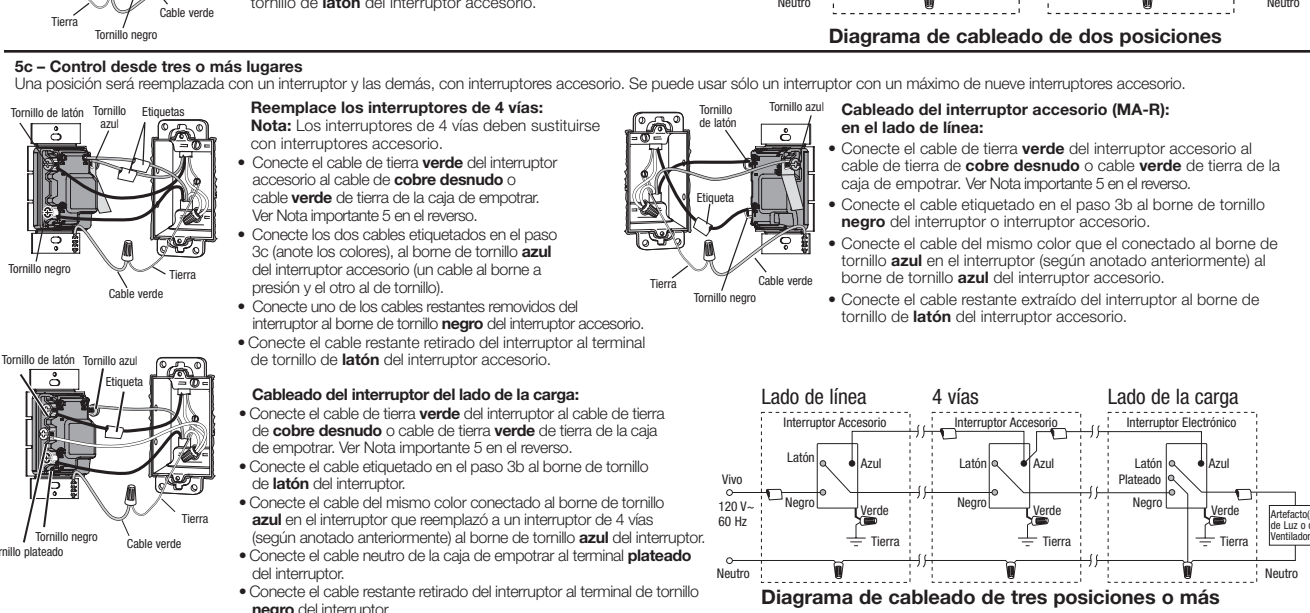
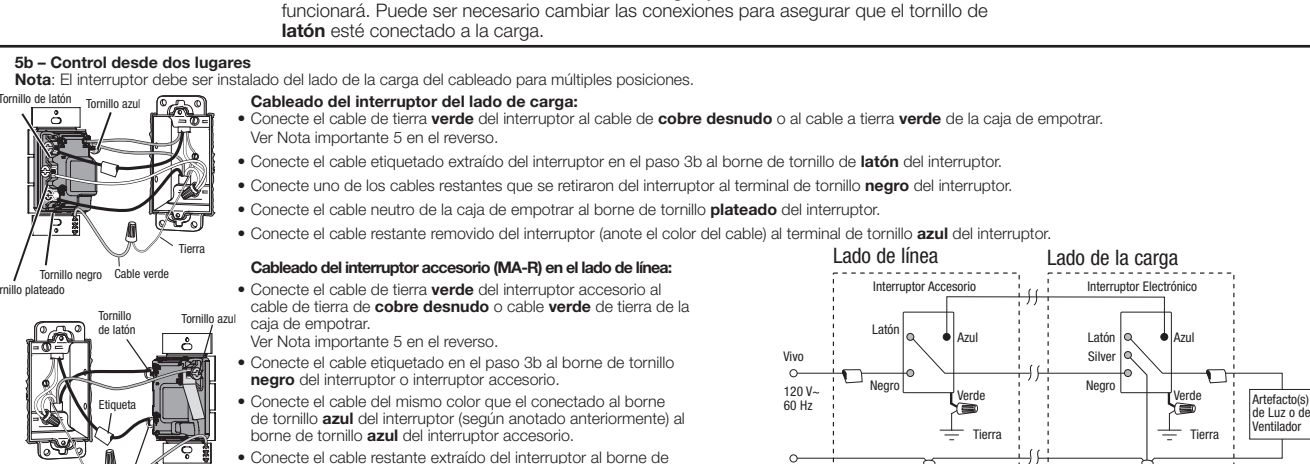
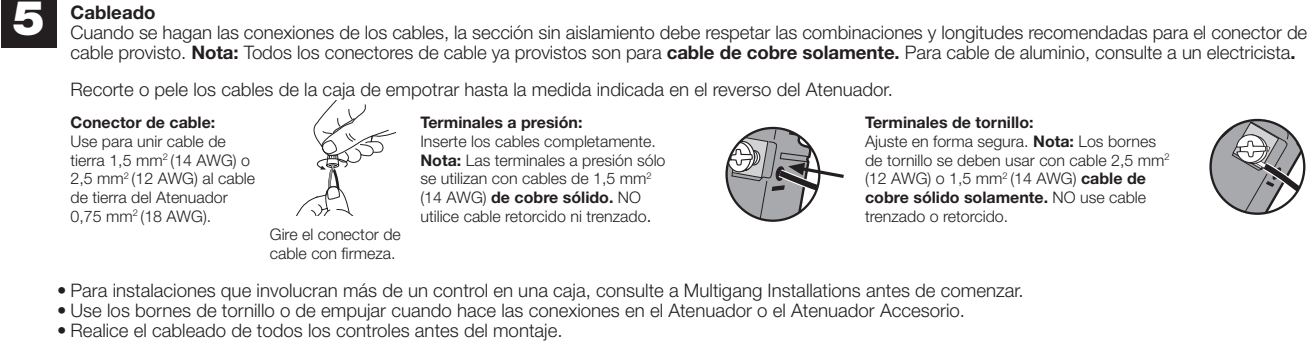
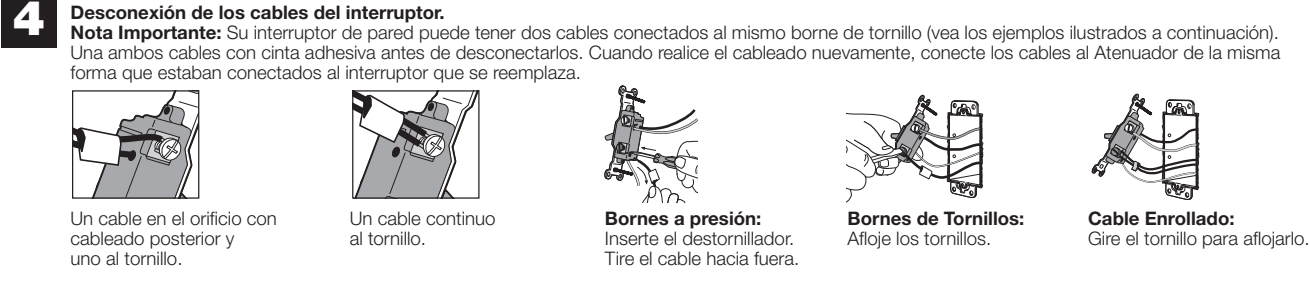
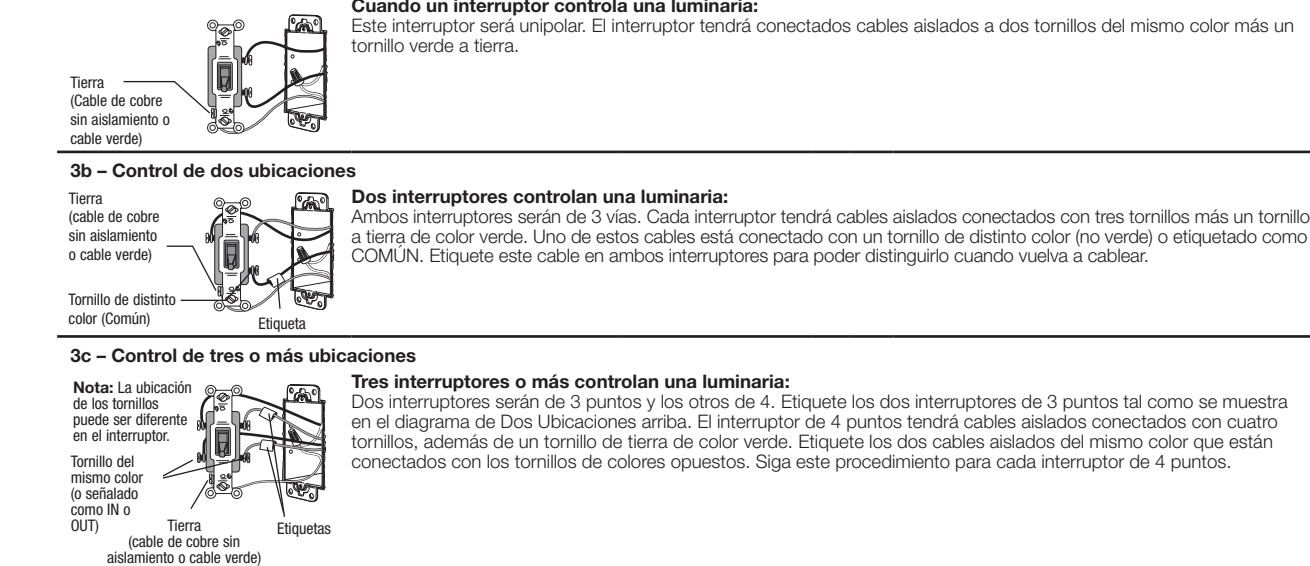
- 1 Turning Power OFF
2 Removing Wallplate and Switch
3 Identifying the Circuit Type and Tagging the Wire on the COMMON Terminal of the Switches



- 6 Mounting Switches to Wallbox
7 Turning Power ON

Instalación

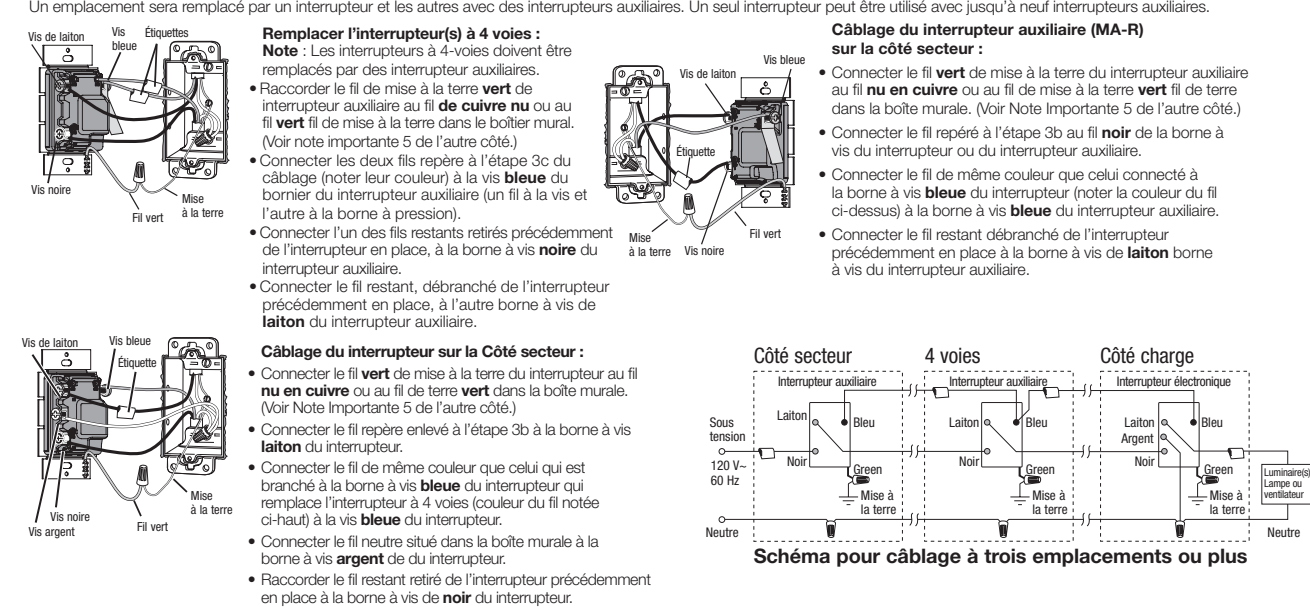
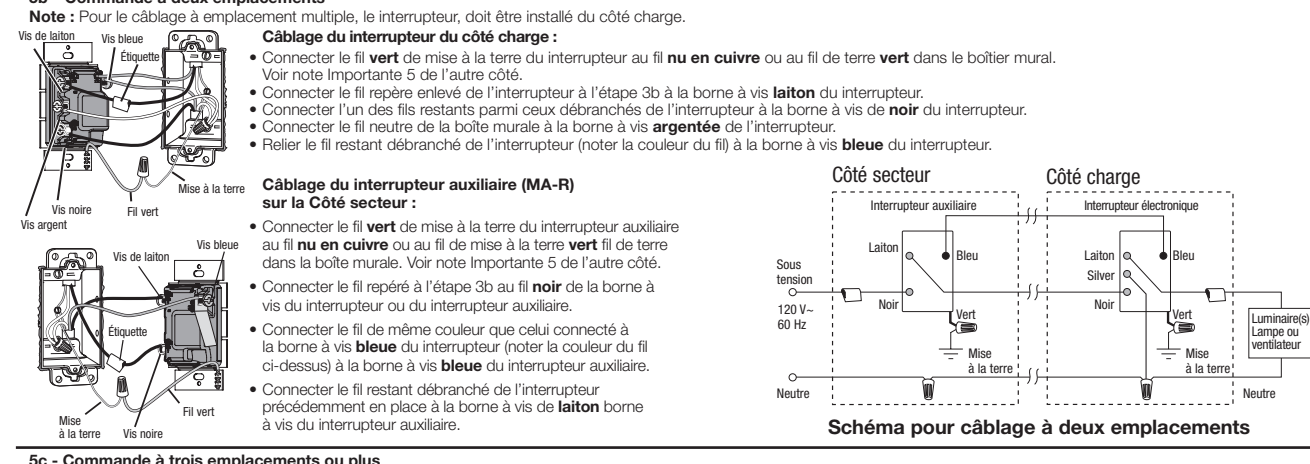
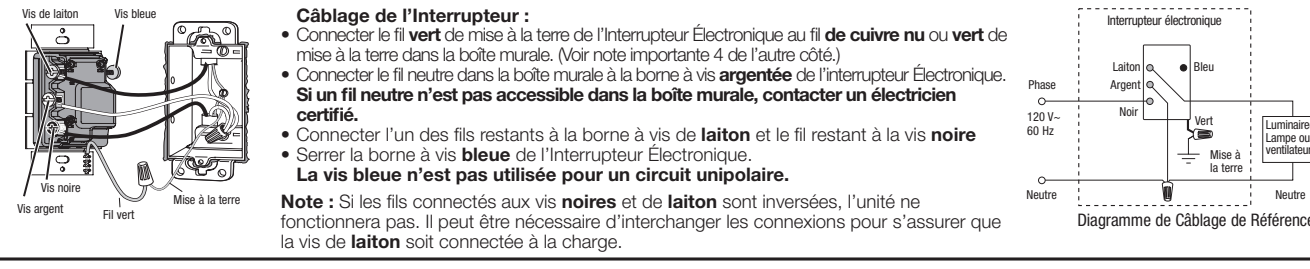
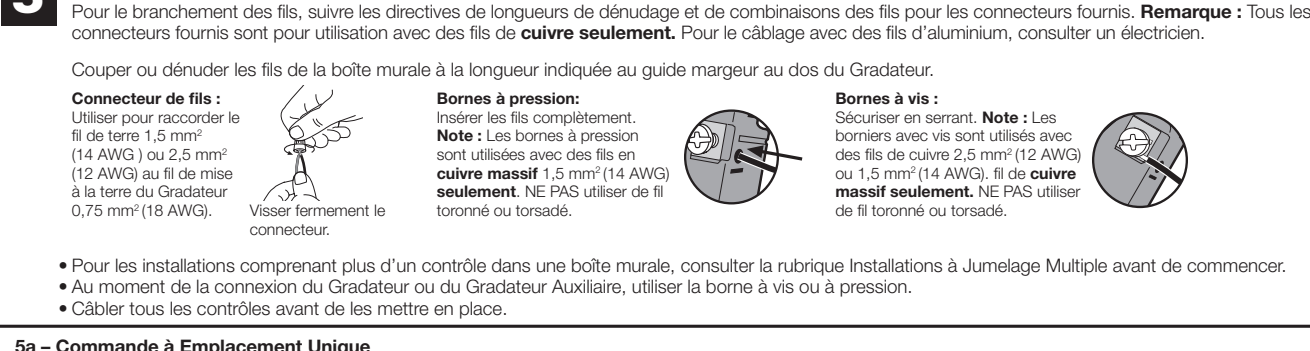
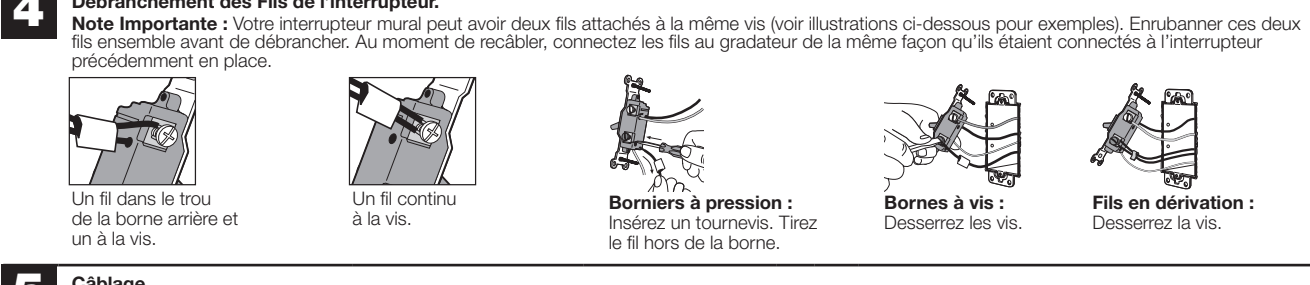
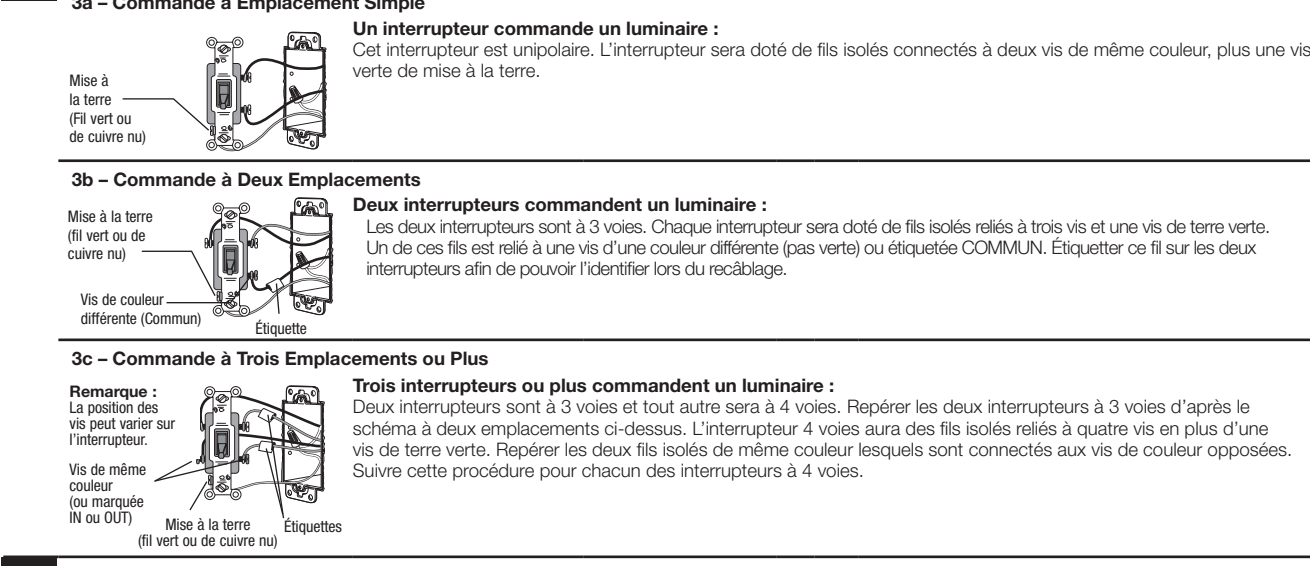
- 1 Desconectar la alimentación
2 Remoción de la Placa de Pared y los tornillos de montaje
3 Identificación del Tipo de Circuito y etiquetado del Cable en el Borne "COMUN" de los Interruptores.



- 6 Montaje de los interruptores en la caja de empotrar
7 ENCENDIDO de la alimentación

Installation

- 1 Couper le Courant OFF
2 Retrait de la plaque murale et de l'interrupteur
3 Identifier le Type de Circuit et le Repérage des fils sur la borne COMMUN des interrupteurs.



- 6 Installation des interrupteurs au boîtier mural
7 Mettre sous tension (ON)