

HBC Series

Premiere Fluorescent Full Body High Bay

FEATURES & SPECIFICATIONS

INTENDED USE

High efficiency T5 High Output or T8 fixtures engineered for premium performance in medium and high ceiling applications ideally suited for warehouses, manufacturing plants, sports facilities and retail spaces. A precision-formed reflector system available in either highly reflective mirror or enhanced white reflector achieve maximum light output for ceilings from 15 feet to 40 feet. The unique lamp arrangement is ideal for wide area lighting to put the light exactly where you need it with less fixtures. Based on ceiling height, these fixtures can replace an HID high bay using half of the wattage. Surface, pendant, chain or stem mounting. Optional wireguard allows easy lamp access. Highest quality materials and workmanship.

SIZE W x L x H in inches (mm)

4 lamp: 11.4W x 48.1L x 3.6Dp 10 lamp: 20.4W x 48.1L x 3.6Dp
6 lamp: 16.4W x 48.1L x 3.6Dp 12 lamp: 20.4W x 48.1L x 3.6Dp
8 lamp: 16.4W x 48.1L x 3.6Dp

*Dimensions are slightly different with Door Frame Option

LAMP

4, 6, 8, 10 or 12 lamp positions

CONSTRUCTION

Housing is 22 gauge prepainted steel. Air vents surround the ballast and lamps in the back of the fixture to maximize lamp and ballast performance, reliability and life. High reflective mirror or enhanced white reflectors are computer designed to maximize photometric performance and put the light where you need it. Reflector snaps into fixture with no tools and is easily removable for ballast maintenance. Access plate in the back makes wiring fast and hassle-free. Back of fixture is designed with built-in mounting holes for tong hanger, cable kit and surface mount. Uplight slots are optional to add uplight. Integral Occupancy Sensor is optional on 6 light series which is ideal for wire guard applications.

MOUNTING

Designed for surface, pendant, stem or chain hanging. Mounting holes are provided for simple, fast installation. See Buyers Guide for list of all mounting options available and sold separately.

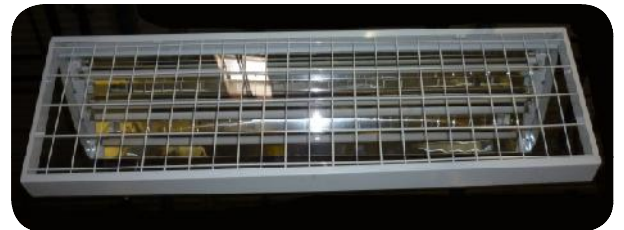
ELECTRICAL

All ballasts are Class P rated and UL/CUL listed. Our ballasts are thermally protected, sound rated and tightly secured to chassis. Consult for the specific ballast required. Available in 120V, 277V, 347V and 480V.



Shown is SS Option with Integral Occupancy Sensor

Door Frame Option See Pages 8, 9 for More Information



DOOR FRAME

Door Frame is 22 gauge prepainted steel snapped together and holds up to two accessory lens and wire guards. Door Frame is held to fixture with lift and shift assembly. A hole for a safety cable is provided.

Available for 4 light and 6 light versions.

LISTING

UL/CUL listed. Ballasts available to meet CEE certified.

TYPICAL OPTIONS AND ACCESSORIES

Emergency ballasts, Cord sets, whips, occupancy sensors, Hanging kits, Wire guards. Contact factory for additional options.

Catalog Number:

Notes:

HBC Series

Premiere Fluorescent Full Body High Bay



Shown is SS Option with Integral Occupancy Sensor

ORDERING INFORMATION

EXAMPLE: HBCDFA632M23MV

HBC	DFA	6	32	M23	MV		
Door Frame [5]		Lamp Count		Lamp Type [1]			
blank	No Door Frame	4, 6, 8, 10 or 12	32	48 in. T8			
DFA	Door Frame w/acrylic lens	Lamps Not included	54	46 in. T5HO			
DFCL	Door Frame w/ clear lens						
*Add 125 for thicker lens							
Ballast & Voltage [1]							
T480	480V-277V Stepdown Transformer						
MV	Electronic, Multivolt (120-277)						
HMV	Electronic, Multivolt, Hi-Lume [3]						
PMV	Electronic, Program Start, T8						
X1	Wired for Single Ended LED T8 Tubes						
X2	Wired for Double Ended LED T8 Tubes						
Series	Reflector [2]				Options [1]		
HBC	M23	Full specular mirror reflector, no uplight, wide distribution				LN	Lamp Include with Kelvin Temperature
Fluorescent High Bay	M21	Full specular mirror reflector, no uplight, narrow distribution				MDT4	Occupancy Sensor Wide Angle
Full Body	W13	Enhanced white reflector, no uplight, standard distribution				MDF4	Occupancy Sensor and Daylight
SSHBC	M23UP	Full specular mirror reflector, wide distribution, with uplight slots				CS8P	5-15P 120V 8ft. Cord & Plug
Fluorescent High Bay	M21UP	Full specular mirror reflector, narrow distribution, with uplight slots				CS12	L7-15P 277V 8ft. Cord & Plug
Full Body with Integral	W13UP	Enhanced white reflector, standard distribution, with uplight slots				CS8	8ft. Cord, No Plug
Occupancy Sensor					WP	6 ft. 3 wire, Whip	
(6 Light Only)					WP4	6ft. 4 Wire, Whip	
					EM	Emergency ballast, 500 lumens	
					EM14	Emergency ballast, 1400 lumens	
					X	No ballast	

Notes

- [1] See current Buyer's Guide for additional ballast, lamp and other options.
- [2] Custom reflectors available to create any light distribution.
- [3] HiLume and LoLume ballasts available for T8 lamps only.
- [4] Available in bulk pack
- [5] 4 OR 6 LIGHT ONLY

See Buyers Guide for all options
 Note: EM14 required for T5HO lamps. Consult factory for occupancy and daylight sensors.

Catalog Number:
Notes:

HBC Series

Premiere Fluorescent Full Body High Bay



4 LIGHT



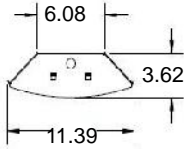
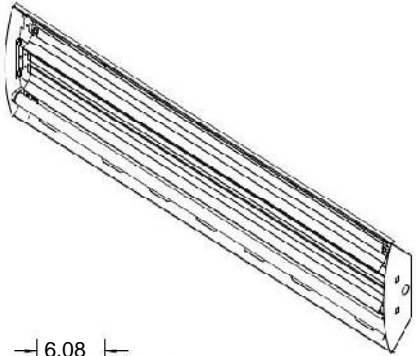
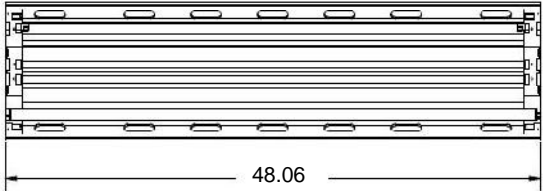
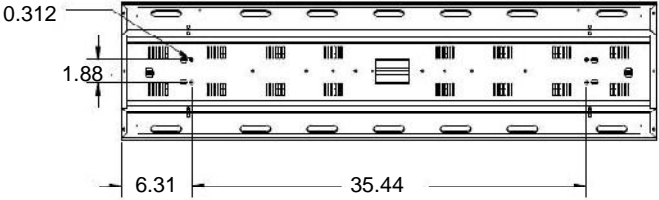
4 Light T8 with Mirrored Reflector



4 Light T8 with White Reflector with Uplight Slots



Back of Fixture



Catalog Number:
Notes:

HBC Series

Premiere Fluorescent Full Body High Bay

6 LIGHT



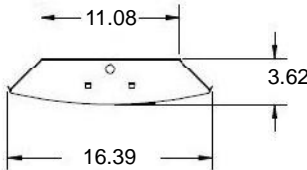
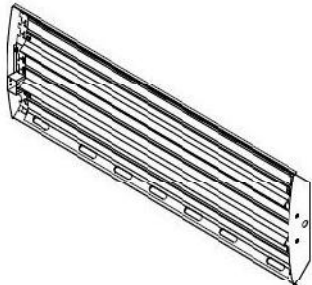
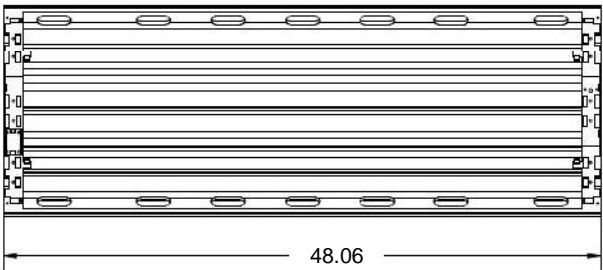
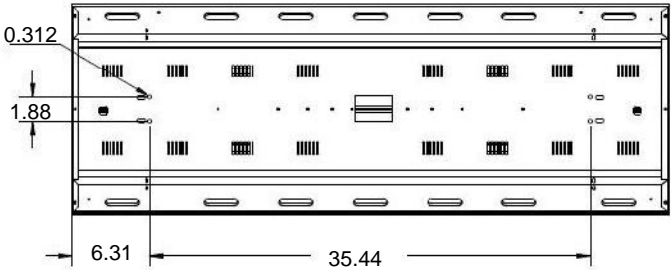
6 Light T5 with Integral Occupancy Sensor and Mirrored Reflector



Back of Fixture



Close-up of Integral Occupancy Sensor in 6 Light Only

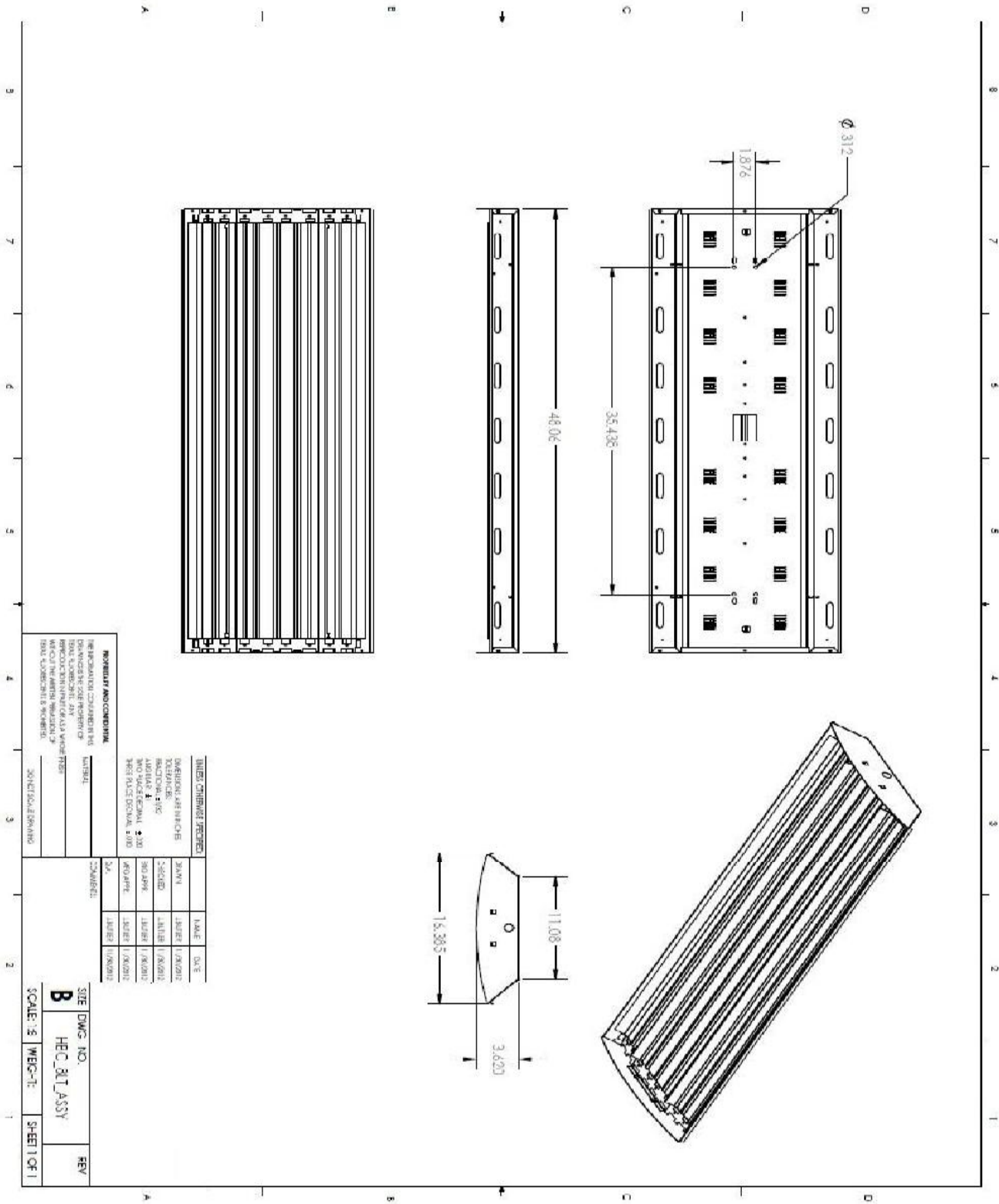


Catalog Number:
Notes:

HBC Series

Premiere Fluorescent Full Body High Bay

8 LIGHT



UNLESS OTHERWISE SPECIFIED, THE DIMENSIONS ON THIS DRAWING ARE TO BE CONSIDERED AS DIMENSIONS TO CENTER UNLESS INDICATED OTHERWISE. DIMENSIONS TO FACE UNLESS OTHERWISE SPECIFIED.

UNLESS OTHERWISE SPECIFIED	UNLESS OTHERWISE SPECIFIED
FINISHES	FINISHES
BRUSHED ALUMINUM	BRUSHED ALUMINUM
POWDER COATING	POWDER COATING
WHITE	WHITE
PRIMER	PRIMER
CONDUIT	CONDUIT
1/2"	1/2"
CONDUIT	CONDUIT
1/2"	1/2"
CONDUIT	CONDUIT
1/2"	1/2"

DATE	DATE
DRAWN BY	DRAWN BY
CHECKED BY	CHECKED BY
DESIGNED BY	DESIGNED BY
MANUFACTURED BY	MANUFACTURED BY
DATE	DATE
BY	BY
DATE	DATE
BY	BY

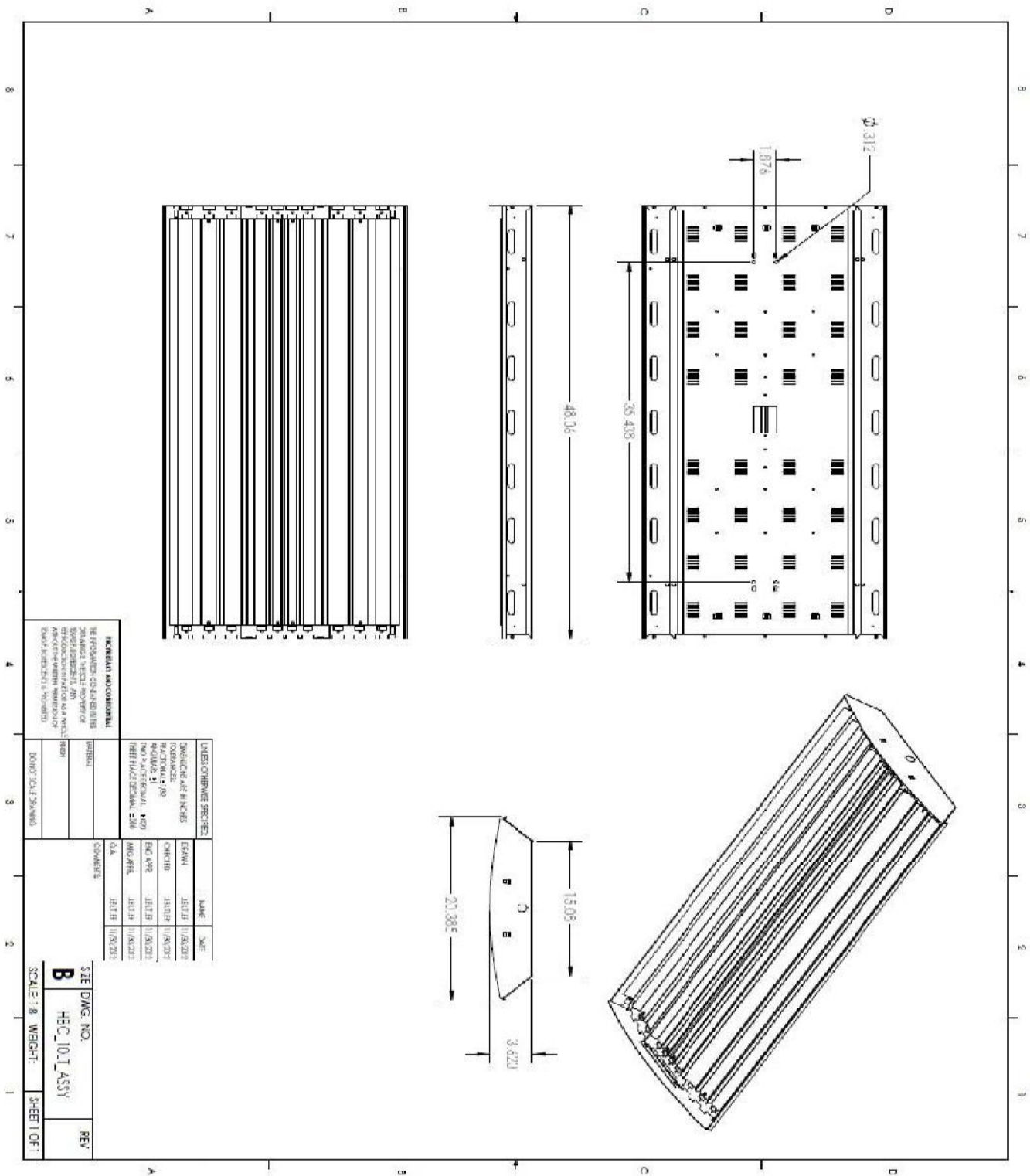
SIZE DWG. NO.
B HBC_BAT_ASSY
 SCALE: S WBC-TL SHEET 1 OF 1
 REV

Catalog Number:
 Notes:

HBC Series

Premiere Fluorescent Full Body High Bay

10 LIGHT

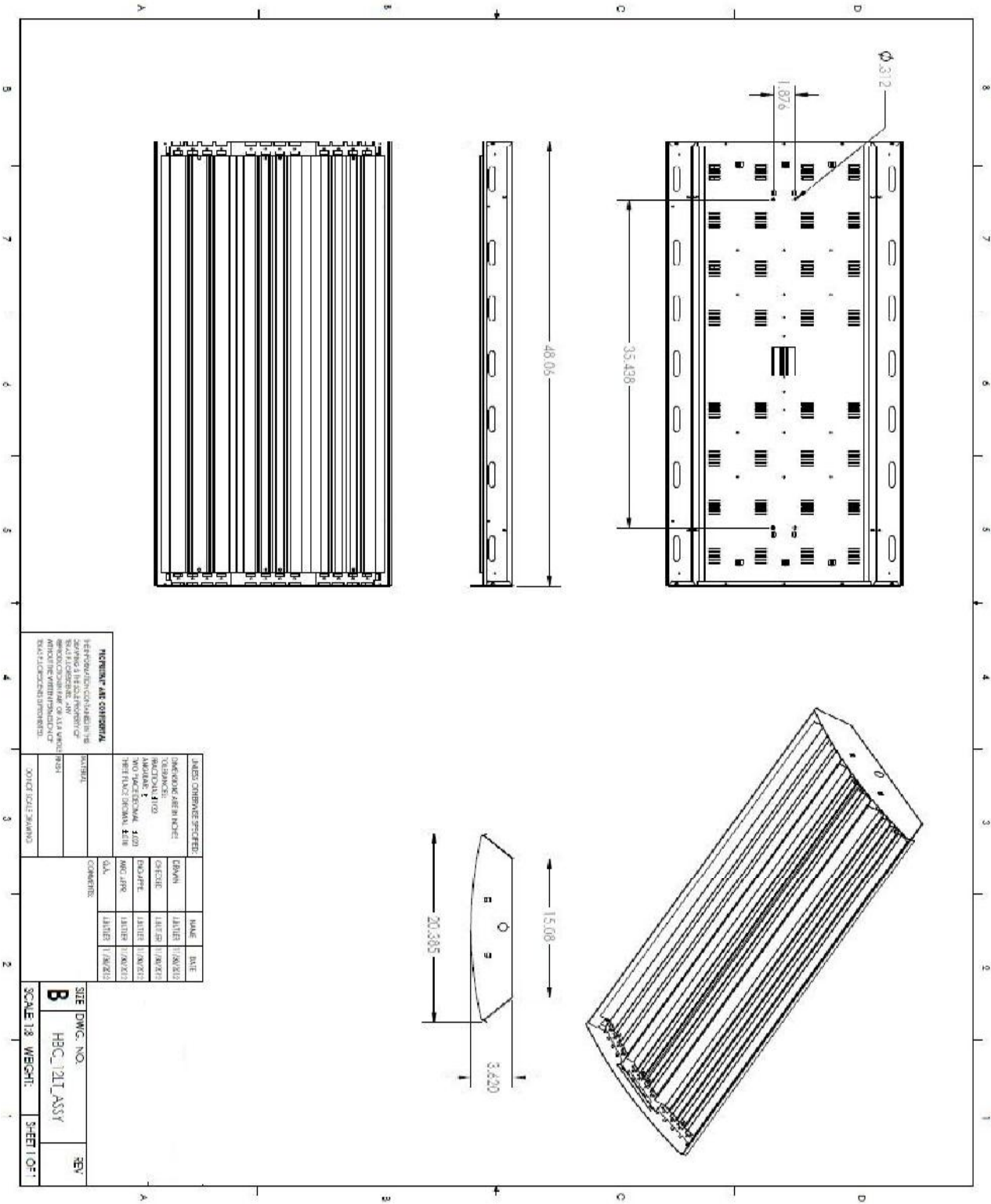


Catalog Number:
Notes:

HBC Series

Premiere Fluorescent Full Body High Bay

12 LIGHT



REVISIONS

1. REVISIONS TO THE ORIGINAL DESIGN FOR THE HBC SERIES 12 LIGHT PREMIERE FLUORESCENT FULL BODY HIGH BAY.

DATE	BY	CHKD	APP'D	REVISION

REVISIONS

1. REVISIONS TO THE ORIGINAL DESIGN FOR THE HBC SERIES 12 LIGHT PREMIERE FLUORESCENT FULL BODY HIGH BAY.

DATE: 01/15/2011
 BY: [Signature]
 CHKD: [Signature]
 APP'D: [Signature]

REVISIONS

1. REVISIONS TO THE ORIGINAL DESIGN FOR THE HBC SERIES 12 LIGHT PREMIERE FLUORESCENT FULL BODY HIGH BAY.

DATE: 01/15/2011
 BY: [Signature]
 CHKD: [Signature]
 APP'D: [Signature]

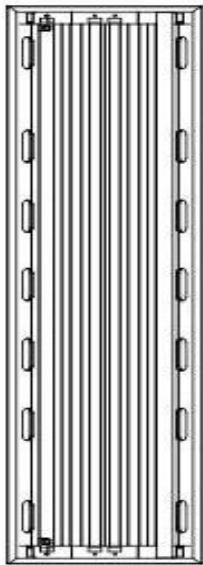
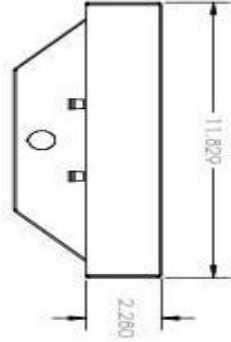
Catalog Number: _____

Notes: _____

HBC Series

Premiere Fluorescent Full Body High Bay

4 Light Door Frame



IMPORTANT AND CONVENTIONAL
 THE INFORMATION CONTAINED IN THIS DRAWING IS FOR INFORMATION ONLY AND IS NOT TO BE USED AS A BASIS FOR DESIGN OR CONSTRUCTION. THE USER SHALL BE RESPONSIBLE FOR OBTAINING ALL NECESSARY PERMITS AND REGULATORY APPROVALS. THE USER SHALL BE RESPONSIBLE FOR OBTAINING ALL NECESSARY PERMITS AND REGULATORY APPROVALS. THE USER SHALL BE RESPONSIBLE FOR OBTAINING ALL NECESSARY PERMITS AND REGULATORY APPROVALS.

DRAWING SPECIFICATIONS		REVISIONS	
DATE	3/1/2023	NO.	1
BY	J. BROWN	DATE	3/1/2023
CHECKED	J. BROWN	BY	J. BROWN
DESIGNED	J. BROWN	DATE	3/1/2023
SCALE	AS SHOWN	BY	J. BROWN
PROJECT	100	DATE	3/1/2023
DESCRIPTION	4 LIGHT DOOR FRAME	BY	J. BROWN
DATE	3/1/2023	DATE	3/1/2023

TEXAS FLUORESCENTS

SCALE: 1/2" = 1'-0"

SHEET 1 OF 1

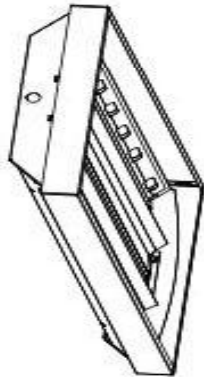
Catalog Number: _____

Notes: _____

HBC Series

Premiere Fluorescent Full Body High Bay

6 Light Door Frame



IMPORTANT AND CAUTIONAL
 THE INFORMATION CONTAINED IN THIS DRAWING IS FOR INFORMATION ONLY. IT IS NOT TO BE USED FOR CONSTRUCTION OR FOR ANY OTHER PURPOSE WITHOUT THE WRITTEN PERMISSION OF TEXAS FLUORESCENTS.

VALUES OR OTHERWISE SPECIFIED		DATE
DESIGNED BY	DR/AMR	1/15/2020
CHECKED BY	JL/DBP	1/15/2020
INCHES	1/8"	1/15/2020
MATERIALS	AS SHOWN	1/15/2020
MANUFACTURE	AS SHOWN	1/15/2020
DATE PLOTTED	1/15/2020	1/15/2020

NO.	DATE	BY	DESCRIPTION
1	1/15/2020	DR/AMR	ISSUED FOR CONSTRUCTION

SCALE: 1/12	WEIGHT:	SHEET 1 OF 1
-------------	---------	--------------



SOE DWG. NO. **B**
 HBC_ASSY_DOOR_6LT
 REV

Catalog Number:
Notes: