

SORAA® VIVID 2

LED MR16 2700K GU10 120V 9.8W



Narrow Spot



Narrow Flood, Flood, Wide Flood



RoHS

OUTPUT	340-6000 CBCP, 380 Lumens
BEAM	10°, 25°, 36°, 60°
COLOR	CCT: 2700K CRI >95, R9 >90
APPLICATION	Halogen replacement for enclosed indoor and outdoor applications

PERFORMANCE

CBCP exceeds 50W halogen lamps
 Available in narrow spot, narrow flood, flood, and wide flood beam angles
 Single light source
 Single crisp shadow
 Dimmable to 20%
 Power Factor: 0.80
 120V (108 min, 132 max)
 Narrow Spot (10°) compatible with Soraa Snap System accessories

COLOR AND WHITENESS

CCT: 2700K, CRI >95, R9 >90
 White point accuracy within 3 step MacAdam ellipse
 Rich saturated color rendering
 Excellent color stability
 Superior white rendering

OPTIMIZED FORM

Standard GU10 form factor:
 1.96" (50mm) W x 2.19" (55.8mm) H
 Compatible with standard fixtures
 Weight: 70g
 Proprietary fanless aluminum design provides superior thermal dissipation

SPECIFICATIONS*

Reference Number	Product Code	Beam	Field	CBCP	Watts	Lumens
MR16-50-B03-120-927-10	00353	10°	20°	6000	9.8	380 (39 lm/W)
MR16-50-B03-120-927-25	00369	25°	42°	1860	9.8	380 (39 lm/W)
MR16-50-B03-120-927-36	00379	36°	60°	980	9.8	380 (39 lm/W)
MR16-50-B03-120-927-60	00389	60°	110°	340	9.8	380 (39 lm/W)

*at stable warm operating conditions (25°C ambient)

HIGHLY COMPATIBLE

Works with trailing edge and leading edge phase cut dimmers (see complete list at www.soraa.com)
 UL and CUL listed

LONG LIFE, LOW MAINTENANCE

Life of 35,000 hours. Three year warranty

ENERGY EFFICIENT

80% more energy efficient than standard halogen lamps
 Typical payback of one year or less

INTENDED USE AND APPLICATIONS

LED retrofit lamp to replace 120V halogen MR16 lamps with GU10 base in recessed downlights, track lighting, and other indoor and outdoor applications. Suitable for enclosed fixtures.

Operating Temperature - Minimum: -40°C (ambient), Typical: 80-110°C (base), Maximum: 120°C (base)

Soraa lamps are designed to safely shut down due to conditions in any thermal environment not conducive to minimum airflow or proper ventilation
 Suitable for damp locations

CERTIFICATIONS

UL, CUL, FCC 47 CFR Part 15 and Part 18 (EMI), RoHS

120V



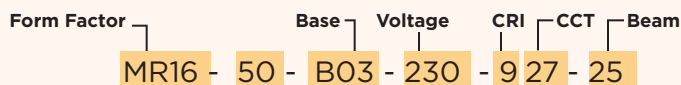
2700K

CRI >95

R9 >90



DIM



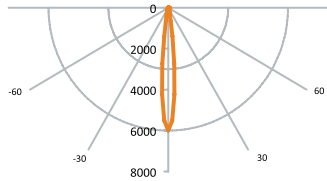
The diagram at left shows how to read the different components of the reference number. Base type B03 refers to the GU10 base.

SORAA VIVID 2 LED MR16 2700K GU10 120V 9.8W

PHOTOMETRICS

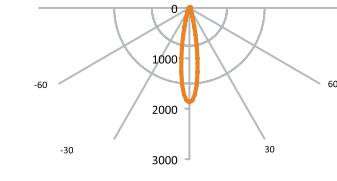
Narrow Spot - 10°

Distance to Floor	Beam Diameter (50% CBCP)	Foot-candles on Floor
3'	.5'	667
6'	1'	167
9'	1.6'	74
12'	2.1'	42
15'	2.6'	27



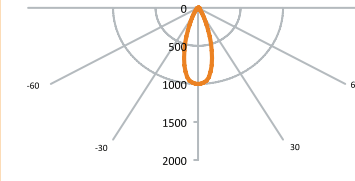
Narrow Flood -25°

Distance to Floor	Beam Dia. (50% CBCP)	Foot-candles on Floor
3'	1.3'	207
6'	2.7'	52
9'	4'	23
12'	5.3'	13
15'	6.7'	8



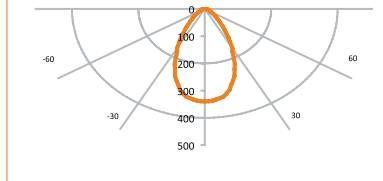
Narrow Flood -36°

Distance to Floor	Beam Dia. (50% CBCP)	Foot-candles on Floor
3'	1.9'	109
6'	3.9'	27
9'	5.8'	12
12'	7.8'	7
15'	9.7'	4



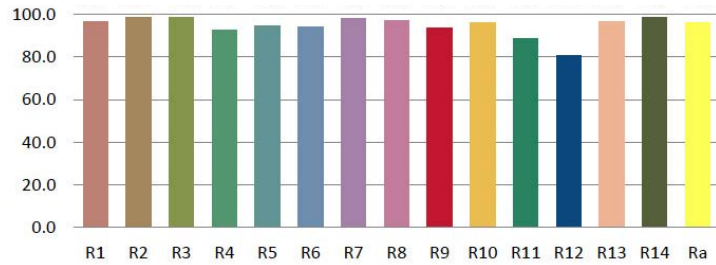
Wide Flood -60°

Distance to Floor	Beam Dia. (50% CBCP)	Foot-candles on Floor
3'	3.5'	38
6'	6.9'	9
9'	10.4'	4
12'	13.9'	2
15'	17.3'	2

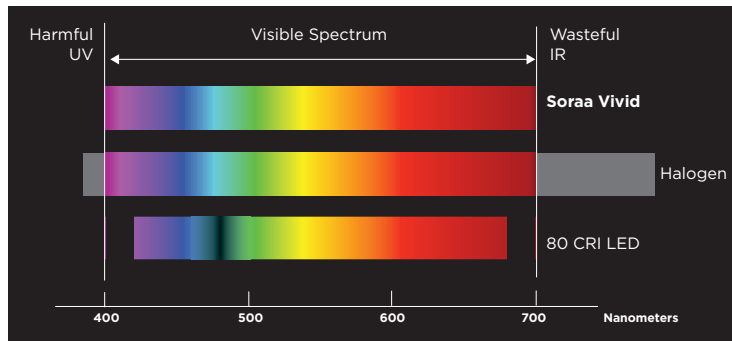


COLOR RENDERING

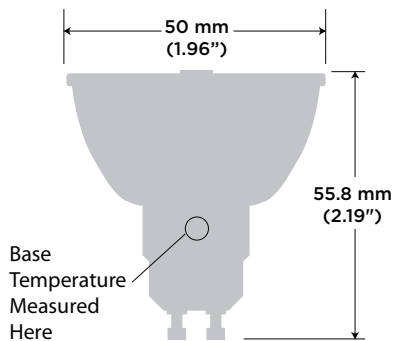
CRI- Relative R Values



Comparative Spectra



DIMENSIONS



SAFETY NOTE ON HEAT

Soraa's unique LED technology allows its lamps to operate effectively and efficiently at higher temperatures than other LED lamps, resulting in more light output per diode. Although Soraa's lamps operate at cooler temperatures than halogen lamps, it is recommended that gloves be worn when handling bare lamps that have been energized, or allow lamps to cool down for approximately ten minutes before handling with bare hands.

DIMMER COMPATIBILITY

Dimmable to 20% or lower, depending on dimmer. Complete transformer and dimmer compatibility information at www.soraa.com.

Information and specifications subject to change. Rev H 02.03.14 D-110139

Soraa Inc. 6500 Kaiser Drive, Fremont, CA 94555
855 GO-SORAA / 855 467-6722 www.soraa.com