

**MR-16 SUPERLINE™ SERIES**

- Only for Use in Approved Halogen Fixtures
- 2 inch Diameter Multilense Reflector
- Excellent Center-to-Edge Beam Uniformity
- High Quality Titanium Oxide Reflector Coating
- Consistent Color
- Integrated UV Protection
- 5000 Hours Average Life
- Low Voltage - 12 Volts
- Universal Burn Position
- Available with Front Glass Cover (/FG)

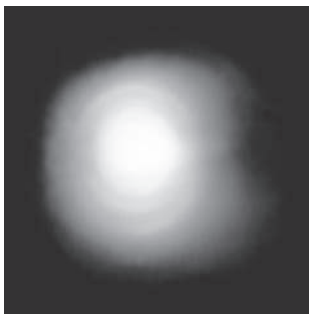
Watts	Ushio Ordering Code	Ushio Lamp Code	Dimension	Color	Beam		Avg Life h	Case Qty	
			MOL (A)	Temp K	Angle	Spread			Max CP cd
<b>SUPERLINE, Superior Beam Spread 2-Pin Base – GU5.3</b>									
20	1000043	BBF/SL, SUPERLINE	1.77	2950	24°	Narrow Flood	870	5000	50
20	1000020	BAB/SL, SUPERLINE	1.77	2950	36°	Flood	510	5000	50
20	1000015	BAB/FG/SL, SUPERLINE	1.78	2950	36°	Flood	510	5000	50
35	1000563	FMV/SL, SUPERLINE	1.77	2950	24°	Narrow Flood	2000	5000	50
35	1000560	FMV/FG/SL, SUPERLINE	1.78	2950	24°	Narrow Flood	2000	5000	50
35	1000577	FMW/SL, SUPERLINE	1.77	2950	36°	Flood	1200	5000	50
35	1000574	FMW/FG/SL, SUPERLINE	1.78	2950	36°	Flood	1200	5000	50
50	1000440	EXZ/SL, SUPERLINE	1.77	3050	24°	Narrow Flood	3000	5000	50
50	1000431	EXZ/FG/SL, SUPERLINE	1.78	3050	24°	Narrow Flood	3000	5000	50
50	1000409	EXN/SL, SUPERLINE	1.77	3050	36°	Flood	1580	5000	50
50	1000406	EXN/FG/SL, SUPERLINE	1.78	3050	36°	Flood	1580	5000	50

All dimensions shown in inches unless otherwise noted.

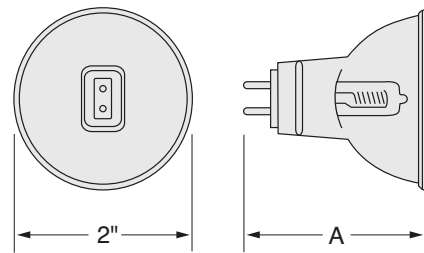
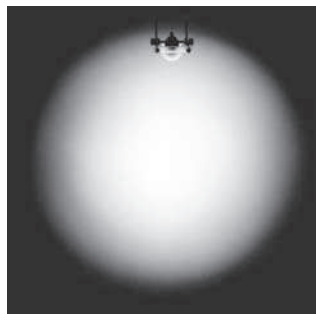
The geometry of the **Superline™** Multilense Reflector together with an axial filament design, guarantees an absolute uniform appearance across the beam without unsightly, dark spots or rings. (All Photos: 20 Watt, flood distribution, taken 1 meter from screen)



**Standard Multimirror Reflector**

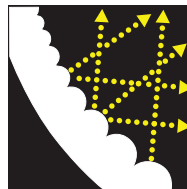
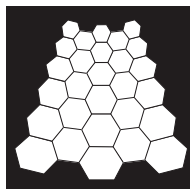


**Superline™- Multilense Reflector**



GU5.3

**Reflector Surface:**  
Optimized reflector design with hexagonal-shaped lenses



**Reflector Cross Section:**  
The hexagonal-shaped lenses provide total uniformity of light distribution

See Photometrics on page 42