

MR16 / Bi-Pin FLOOD R-F302B



Bi-pin Medium



Bi-pin Wide



MR16



Solid Brass knuckle is easily adjustable and may be secured with a hex key. The knuckle is potted to limit moisture and insect intrusion.



R-A3A

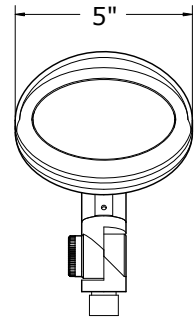
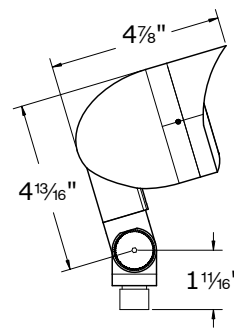


R-A3B

OPTIONAL PARTS

MODEL NO	DESCRIPTION
R-A3A	Aluminum Stake Powder Coat
R-A3B	Natural Solid Brass Stake

- MR16 or T4 bi-pin lamp (35W, 36° [FMW] MR16 and 35W T4 included)
- Solid die-cast brass luminaire
- Oval and round light distributions
- Sleek design with soft edges
- ½" NPS knuckle with ABS stake included for quick installation
- Large easy to adjust knuckle (can be tightened with a ¼" hex key)
- Potted knuckle to limit water and insect intrusion into luminaire
- Natural antique bronze patina finish (NAZ) standard
- Two oval reflectors included with the fixture for wide and medium wall washing
- Fixture can be mounted upright or upside down
- 12 volt UL 1838 listed luminaire is safe for wet locations up to 50W
- Fixed GU5.3/6.35 socket
- Shroud is lockable with hex key (included)
- 25' of 16 AWG SPT-2W cable and direct-bury wire connectors included
- Optional cast brass or powder coated cast aluminum stake
- Requires low voltage power supply, ordered separately



Model	Material	Lamp	Natural Finishes	Powder Coat
R-F302	B Solid Brass	MR16 or 36° [FMW]	NAZ	PAB
			NAP	PBZ
		T4 Bin-Pin T4	NAR	PDV
			NAS	POC
		2000 hr, 35W	NOC	PRI
		2000 hr, 35W	UFB	PSD
			NFC	PTB
				PWB
				PTW

R-F302B - NAZ

MODEL NO	MATERIAL	FINISH
	B=Brass	Natural Antique Bronze

*We reserve the right to change specifications without notice.

Natural Patinas

Natural Antique Bronze (NAZ) is the Standard finish. Other Natural Patina finished and Powder Coat finishes are available for an extra charge.

Troy Landscape Lighting Natural Patinas are chemically etched finishes available on Solid Brass and Solid Copper fixtures only. chemical etching accelerates the natural aging and weathering that copper and brass experience when used outdoors. These finishes will continue to develop and richen over time. They begin with an "N". Unfinished Brass and Unfinished Copper are just as described - unfinished. The metal will oxidize and darken with age.

Powder Coat Finishes

Troy Landscape Lighting powder coat finish colors are available on all fixtures for an additional charge. The powder coat finish is baked on at 400° over a primer pre-coat for both chip and weather resistance. All powder coat finishes begin with a "P".

Standard Finish on Solid Brass



NAZ

Natural Antique Bronze

Natural Patina Finishes on Solid Brass



NAP

Natural Autumn Patina



NAR

Natural Rust



NAS

Natural Antique Brass



NOC

Natural Old Copper



UFB

Unfinished Brass

Natural Patina Finishes on Solid Copper



NOC

Natural Old Copper



UFC

Unfinished Copper

**COPPER
AVAILABLE ON
LIMITED MODELS -
SEE INDEX**

Powder Coat Finishes All Metal Fixtures



PAB

Aged Bronze



PBZ

Bronze



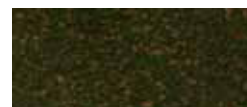
PDV

Dark Verdi



POC

Old Copper



PRI

Rusty Iron



PSD

Sand



PTB

Textured Black



PWB

Textured Weathered Brown



PTW

Textured White

*We reserve the right to change specifications without notice.