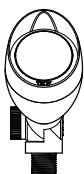
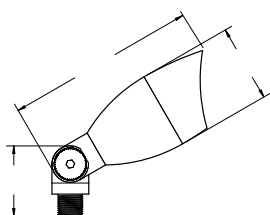




R-F423B-NAZ (NAZ) Natural Antique Bronze

- MR16 lamp (20W, 36° [BAB] included)
- Solid die-cast brass luminaire
- Sleek design with soft edges
- ½" NPS knuckle with ABS stake included for quick installation
- Borosilicate convex lens
- Large easy to adjust knuckle (can be tightened with a ¼" hex key)
- Potted knuckle to limit water and insect intrusion into luminaire
- Natural antique bronze patina finish (NAZ), standard
- 12 volt UL 1838 listed luminaire is safe for wet locations up to 50W
- Fixed GU5.3 socket with lamp support for longer socket life
- Adjustable shroud is lockable with hex key (included)
- 25' of 16 AWG SPT-2W cable and direct-bury wire connectors included
- Optional cast brass or powder coated cast aluminum stake
- Requires low voltage power supply, ordered separately



Solid Brass knuckle is easily adjustable and may be secured with an hex key. The knuckle is potted to limit moisture and insect intrusion.



R-A3A



R-A3B

OPTIONAL PARTS

MODEL NO	DESCRIPTION
R-A3A	Aluminum Stake Powder Coat
R-A3B	Natural Solid Brass Stake

Model	Material	Lamp	Natural Finishes	Powder Coat
R-F423	B Solid Brass	MR16 5000 hr, 20W 36° [BAB]	NAZ NAP	PAB PBZ
			NAR NAS	PDV POC
			NOC UFB	PRI PSD
			NFC	PTB PWB
				PTW

R-F423B - NAZ

MODEL NO	MATERIAL	FINISH
	B=Brass	Natural Antique Bronze

*We reserve the right to change specifications without notice.