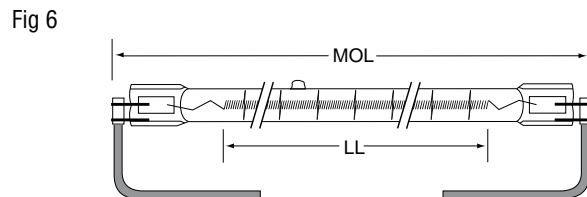
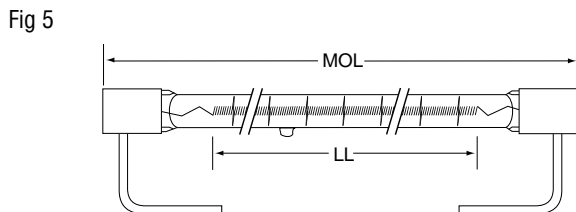
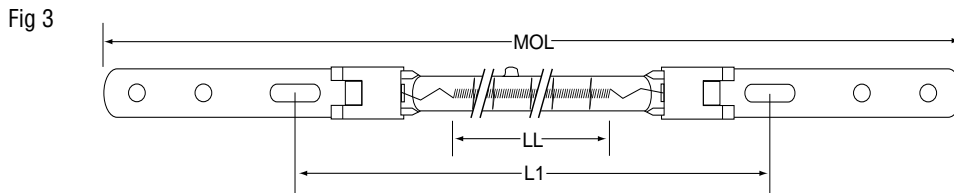
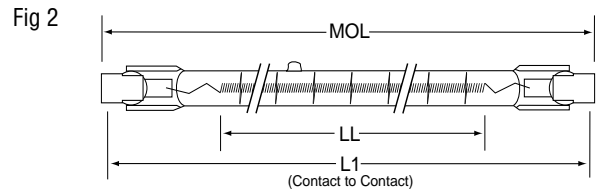
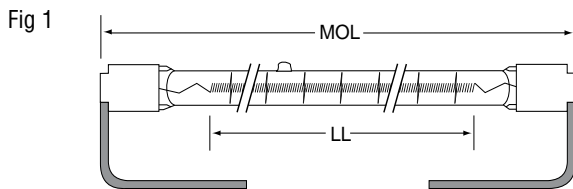


Design Voltage	Ushio Ordering Code	Ushio Lamp Code	Dimensions			Color Temp (K)	Avg Life (h)	Fig No	Alternate Designation	Lamp Notes
			MOL (mm)	LL (mm)	L1 (mm)					
2000 Watts										
240	1001337	QIH240-2000/C	350.0	280	—	2500	5000	6	13213Y/00	IW,R
240	1001339	QIH240-2000/S	303.0	248	—	2500	5000	1	QH2M/T3/1CL/HT	
240	1001340	QIH240-2000/S2	351.0	254	—	2500	5000	1	QH2M/T3/CL/HT	
240	1001341	QIH240-2000/VB	485.0	280	370	2500	5000	3	13168X	
240	1001342	QIH240-2000/VC	350.0	280	—	2500	5000	6	13168V	IW,R
240	1003595	QIH240-2000/VC2	349.0	280	—	2500	5000	6	—	R
240	1001343	QIH240-2000/VS	303.0	248	—	2500	5000	1	QH2M/T3/1CL/HT/VB	
240	1001344	QIH240-2000/VZD	357.0	280	—	2500	5000	5	13168Z/98	IW,S
240	1001350	QIH240-2000T/S	603.0	508	—	2500	5000	1	2000T3/524	
240	1002251	QIH240-2000/VZH	357.0	280	—	2500	5000	5	13168Z/98	IW
240	1003405	QIH240-2000/ZD4*	354.0	290	—	2500	5000	5	—	IW
240	1003243	QIH240-2000/ZH3*	357.0	280	—	2500	5000	5	—	IW
240	1003404	QIH240-2000/ZH5*	354.0	290	—	2400	5000	5	—	IW
400	1001345	QIH400-2000/VB	623.0	410	508	2500	5000	3	13765X	
400	1001362	QIH400-2000/ZB	623.0	410	508	2500	5000	3	13245X/98	

*For plastic blow molding

Please contact National Customer Service Center for detailed specifications and special design requirements.



Dimensions

- MOL = Maximum Overall Length
- LL = Lighted Length (filament length) (avg.)
- L1 = Designated Length (avg.)
- Maximum bulb diameter: 11mm
- All dimensions are in millimeters (mm)

Lamp Notes

- F = Faston Terminal (FR = Faston Receptacle, FT = Faston Tab)
- IW = Insulated Wire
- R = Ring Tongue Terminal
- S = Spade Tongue Terminal
- Standard Lead Wire Length: 145mm

