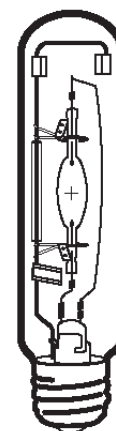


**HIT 150W/U/LU/T46/4K**
**Product Number: 71144**
**Lamp Type:** Tubular Metal Halide

**Control Gear:** HPS Ballast + Ignitor

**Performance Data**

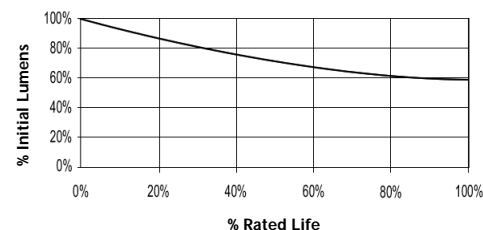
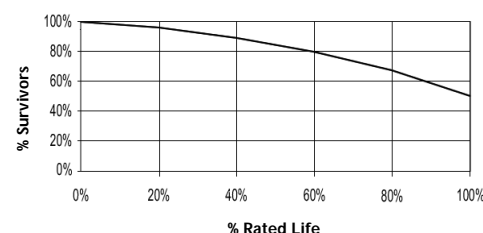
Light Output (Lumens @ 100 hours)	14000V / 12600H
Lamp Lumens Per Watt	93
Rated Life (Hrs. @ 10 Hr. /Start)	15000V / 11250H
Correlated Colour Temperature (K)	4000
Chromaticity (CIE - X Y)	385, 390
Colour Rendering Index (CRI) or (Ra)	65
Typical Warm Up Time (Minutes)	1-2
Typical Hot Restart Time (Minutes)	2-4
Burning Position	Universal


**Physical Data / Requirements**

Base Designation	E40
Bulb Designation	T46
Bulb Diameter (mm)	46
Max. Overall Length (mm)	211
Light Centre Length (mm)	132
Effective Arc Length (mm)	19
Max. Base Temperature (°C)	250
Max. Bulb Temperature (°C)	450
Luminaire Type	Enclosed
Socket Pulse Rating (KV)	4.5

**Lamp Electrical Data / Requirements**

IEC Standard	-
Lamp Wattage (W)	150
Lamp Operating Voltage (V)	95
Lamp Operating Current (Amps)	1.8
Min. Open Circuit Voltage (RMS)	198
Min. - Max. Starting Pulse (Peak V)	2800-4500
Min. Pulse Width at 2500V (microseconds)	1
Min. Pulse Rate Per ½ cycle	1
Pulse Position (Electrical Degrees)	60-90, 240-270

**Lumen Maintenance**

**Lamp Mortality**

**Revision:** 28/02/2006

**Notes:**

The specification contains data about typical performance on 50Hz sine wave ballast at nominal power. Actual values may depend on ballast and applications. Complies with (CE), Low Voltage (CE), WEEE and RoHS Directives.