



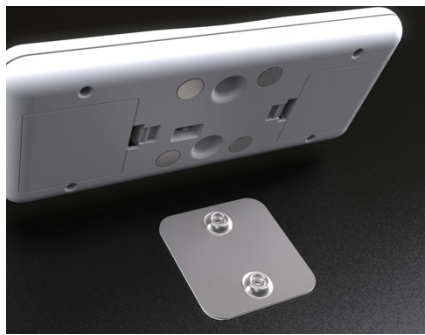
Model # - BL200

In-Cabinet Light

Automatically lights cabinet interior when door is opened



Light can be aimed to shine where it is needed.



Unique mounting system makes installation and battery replacement simple.



Patented "Low Glow" manual on/off button.

Features & Benefits

- Easy Installation – No contacts or wires to run.
- Automatic operation – Activates when doors are opened and turns off after fixed time.
- LED Light Source – Never needs to be replaced
- 4 C Batteries – Lasts up to 1 year with regular use
- Adjustable Light – Aim light where you need it.
- Easy Mount Feature – Easy stick in place mounting and removal
- Manual/Auto Switch – Allows unit to by pass auto shut off.
- Low Glow Button – Manual On/Off button can be easily located in the dark.